

NOTES

- Refer to the *TCD/IP Manual* for more detailed instructions.
- Perform the WinTCD installation after the TCD/IP system wiring has been connected.

DEFINITIONS

- **DEVICE:** any resource controlled by a PRO-BUS or PLUS-BUS interface
- **EVENT:** control element that holds information about "what" is supposed to happen and "when"

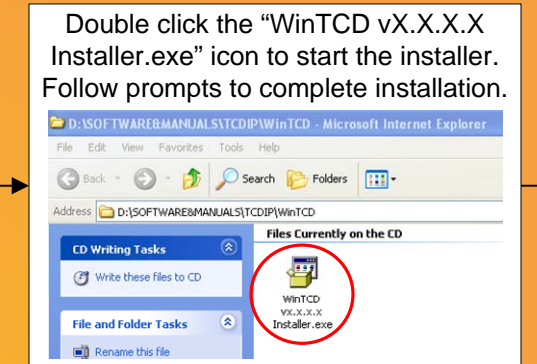
START

Close all running applications on PC.

Insert the LEIGHTRONIX PRODUCT RESOURCE DISC into your PC's CD-ROM drive. An HTML page should automatically load.

NOTE If the HTML page does not automatically load, perform the following steps:

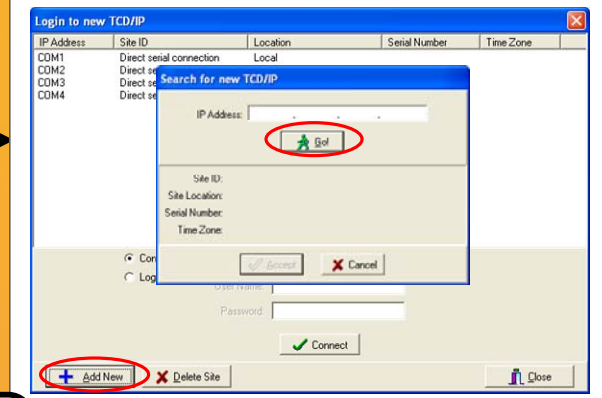
1. Open the Windows® "My Computer" folder.
2. Double click your CD-ROM drive.



Double click on the "Leightronix WinTCD" desktop icon to run WinTCD. The "Login to new TCD/IP" dialog box will appear.



Click "Add New" to open the "Search for new TCD/IP" dialog box. Type in the IP address displayed on your TCD/IP's front panel in the "IP Address" field and click "Go!"

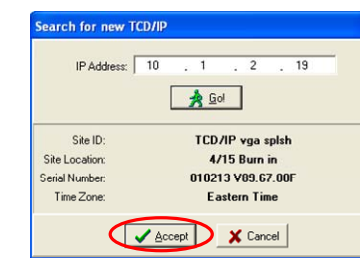


NOTE For information on serial PC management, refer to the *TCD/IP Manual*.

Does your TCD/IP's site information appear in the middle of the "Search for new TCD/IP" dialog box?

Yes

Click "Accept" to add TCD/IP to WinTCD and return to the "Login" dialog box.



Highlight your Controller's IP address in the "Login to new TCD/IP" dialog box.

Check the following to ensure the IP settings and network connections for your TCD/IP and PC are correct:

- Link lights on the back of the TCD/IP and PC are lit.
- The IP addresses are within the network range.
- The subnet masks are the same.

Contact your network administrator or LEIGHTRONIX if you are unable to resolve the problem.

Continue steps on page 2 of this document.

CONTINUE

In the "Login" dialog box, perform the following steps to log in to WinTCD:

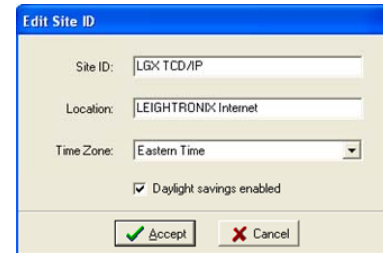
1. Select "Log in As" and enter the following:
 - "User Name" field: "admin"
 - "Password" field: **last 6 digits of your TCD/IP's serial number**
2. Click "Connect."

NOTE

Username and password are case sensitive.

From the "Configure" menu, click on "Change Site ID" and enter the following:

- "Site ID": enter a name for TCD/IP
- "Location": enter where TCD/IP is located
- "Time Zone": use drop down menu to select
- "Daylight savings": select if applicable to your area



From the "Configure" menu, click on "Set TCD/IP Time" and perform **one** of the following:

- Enter time and date using the corresponding drop down menus and click "Set Time."
- Use your PC's date and time to set your TCD/IP's clock by clicking "Coordinate to this system."

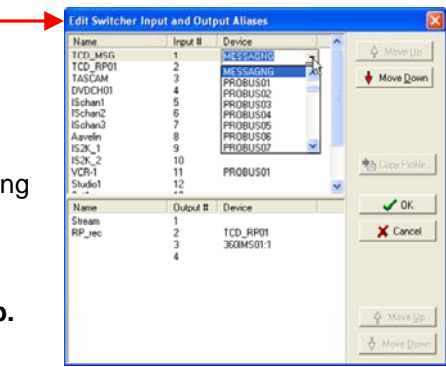
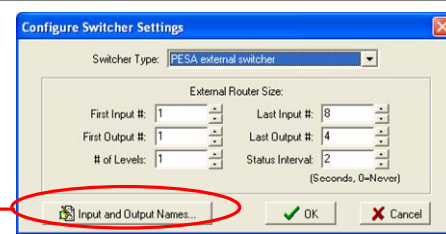


From the "Configure" menu, click on "Switcher Configuration" and perform the following:

1. From "Switcher Type" drop down list, select the external switcher connected to your TCD/IP.
2. If you selected a non-LEIGHTRONIX switcher, complete the "External Router Size" fields.
3. Click "Input and Output Names" and perform the following:
 - Assign names to the inputs and outputs under the "Name" columns.
 - Use the drop down menus under the "Device" columns to assign the devices connected to your inputs and outputs.
4. Click "OK."

NOTE

Reboot when prompted upon completion of this step.



If desired, rename any PLUS-BUS interfaces from the "PLUS-BUS Interface Information" dialog box (click on "PLUS-BUS Interfaces" in the "Configure" menu).

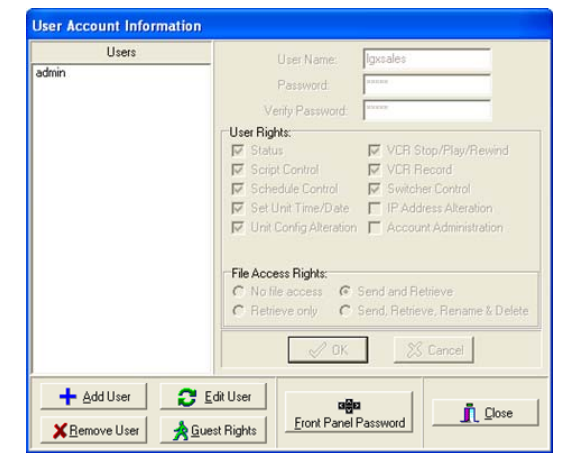
NOTE

This step must be performed before the next in order to ensure WinTCD will recognize your PLUS-BUS interface device input assignments.

From the "Configure" menu, click on "User Accounts/Rights" to open the "User Account Information" dialog box. Perform the following:

1. Select the "admin" username. Click "Edit User" and change the password.
2. Click "Add User" to create additional user accounts.
3. Click "Guest Rights" to create a guest user account.

NOTE: A password is not required to log into WinTCD.



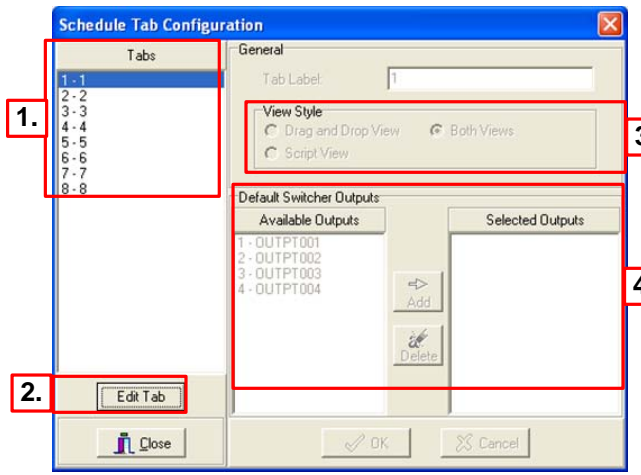
From the "Configure" menu, click "Schedule Tab Configuration" to open the corresponding dialog box. Configure each channel tab as follows:

1. Select the channel tab you wish to configure from "Tabs" list.
2. Click the "Edit Tab" button.
3. Under "View Style," choose "Both Views" for creating and viewing events in the schedule editor window.

NOTE

Script created in the "Drag and Drop" tab's event script pane appears in itemized format, while the "Script" tab displays script in raw data format.

4. Add up to 4 of the "Available Outputs" to the "Selected Outputs" list to provide the destination(s) for switch event actions scheduled on the selected channel tab.



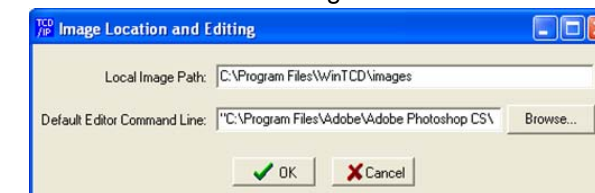
Will you be using digital video messaging?

Yes

No

From the "Configure" menu, click on "Image Path and Editor" to open the corresponding dialog box. Configure the image path and editor as follows:

1. In the "Local Image Path" field, enter the desired file path for storing images imported via WinTCD.
2. In "Default Editor Command Line," either click "Browse" or enter path and executable file of a JPEG image editing program installed on your PC.
3. Click "OK" to save changes.



END