

INVISIBLE SECURITY BARRIER



The Inferno sound
Customer categories
Applications



The Inferno Sound

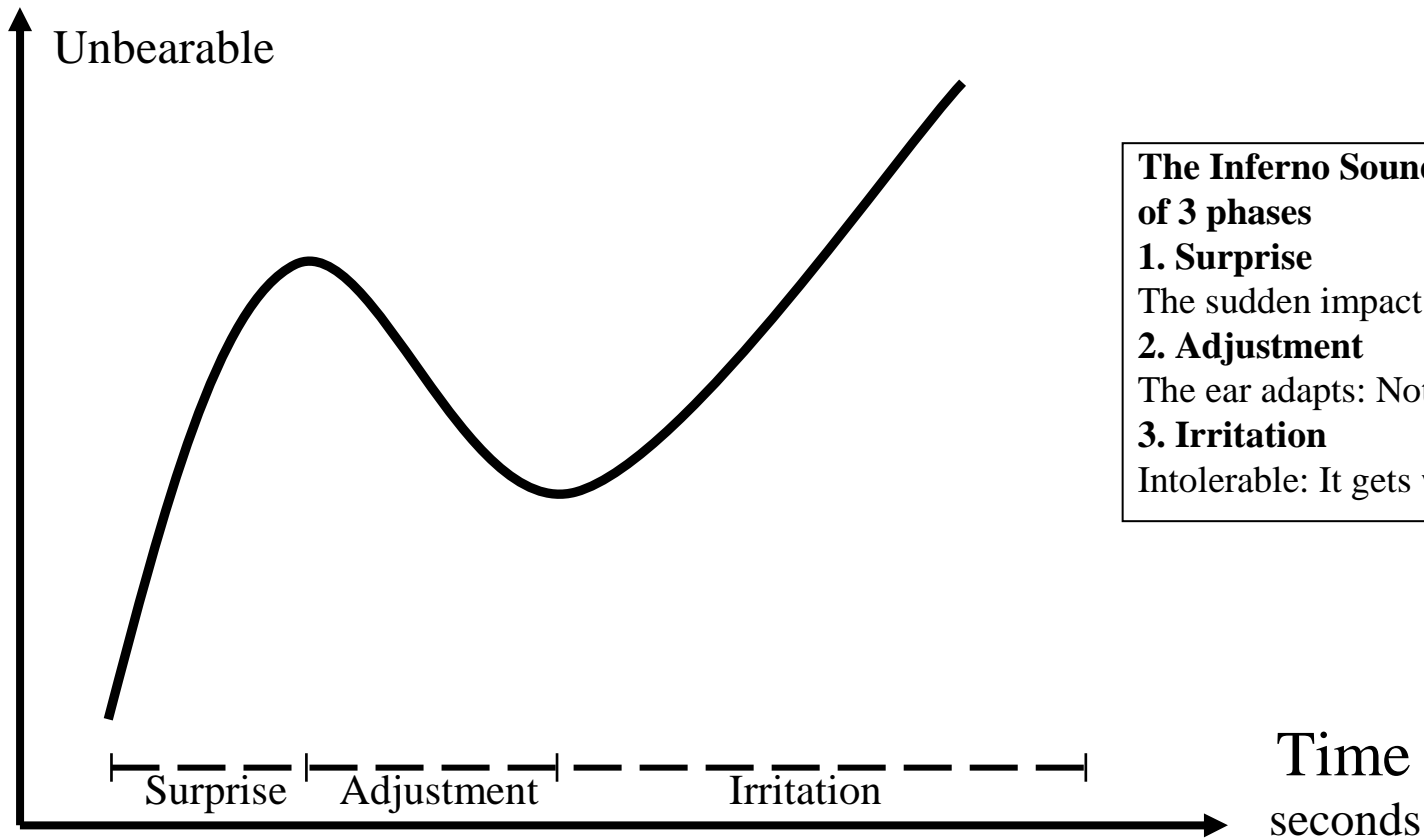
- Purpose with a normal siren:
 - Announce – the alarm is activated
- Purpose with an Inferno siren
 - Annoying – you want to disappear
 - Dramatic reduction of the time for break in and damage
- Characteristics of an Inferno Siren
 - Unbearable noise, a sound barrier
 - Harmless
 - Nice design
- Means of achieving the Inferno Sound
 - High dB
 - Irritating frequencies
 - Patented method
- Next generation of sirens – The Inferno Sound

Indusec

The Inferno Sound - Perception



Perception



The Inferno Sound characterises of 3 phases

1. Surprise

The sudden impact: Help

2. Adjustment

The ear adapts: Not so bad

3. Irritation

Intolerable: It gets worse

The Inferno Sound builds up over time

Compare sound pressure

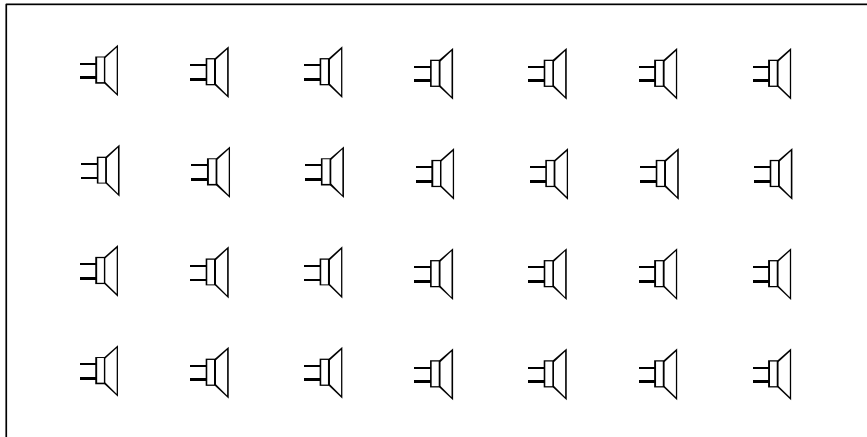


Description	Sound Pressure N/m ²	dB(A)	Sound Intensity W/m ²
Large jet aircraft (5m)	63.2	130	10
Large jet aircraft (40m)	20	120	1.0
Large orchestra (5m)	6.3	110	0.1
Tube Train passing	2.0	100	0.01
Inside Tube Train	0.63	90	10 ⁻³
Noisy Office	0.2	80	10 ⁻⁴
Conversational speech	0.063	70	10 ⁻⁵
Reading From a Book (1m)	0.02	60	10 ⁻⁶
Average Office	6.3x10 ⁻³	50	10 ⁻⁷
Quiet Office	2x10 ⁻³	40	10 ⁻⁸
Public Library	6.3x10 ⁻⁴	30	10 ⁻⁹
Whisper (2m)	2x10 ⁻⁴	20	10 ⁻¹⁰
Quiet Whisper (1m)	6.3x10 ⁻⁵	10	10 ⁻¹¹
Threshold of audibility	2x10 ⁻⁵	0	10 ⁻¹²

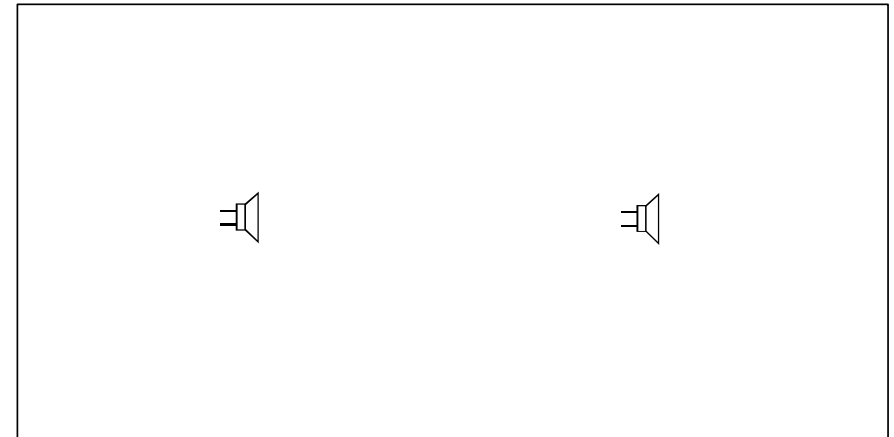


Siren Coverage Comparison

to achieve 112 dB(A) in an area 15 x 7 m



Either fit twenty eight sirens with 115 dB(A) at 1m

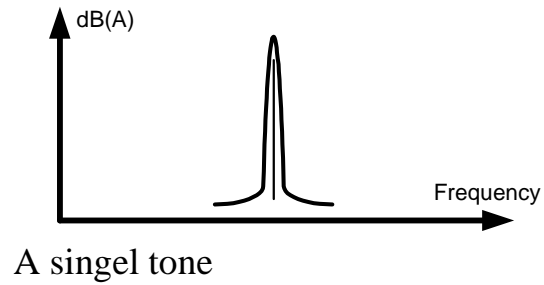


or fit just two Inferno Mini 125 dB(A) at 1 m

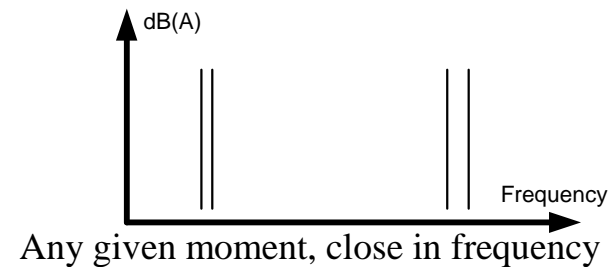
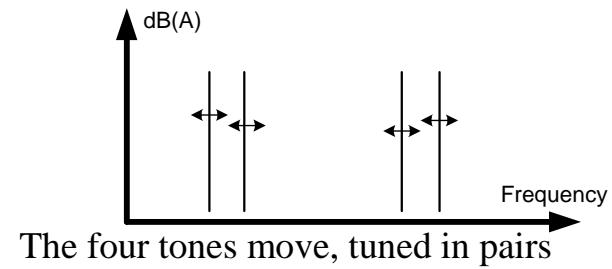
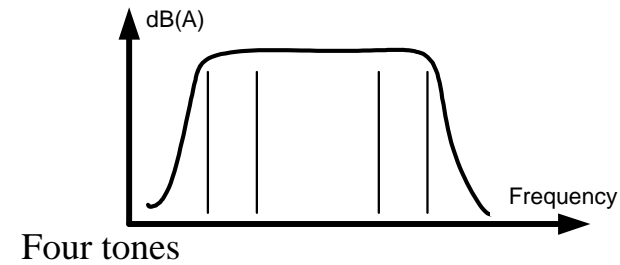


Inferno Sound Generator

Traditional siren



The Inferno siren





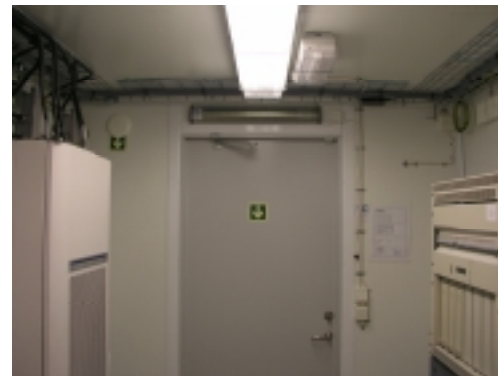
Customer categories

- Premises critical to the business
 - Server rooms, stocks, research laboratories etc
- Hazardous locations
 - Dangerous for unauthorized people: distribution plants, nuclear power plants etc
 - Could be dangerous: chemical industries, laboratories etc
- Theft hit areas
 - Jeweller's, watch-maker's, fur-dealer's etc
 - Golf and electronic shops, lorries etc
- Goods especially liable to be stolen
 - Drugs, cigarettes, weapons, cash etc

Indusec

Applications

- Places with an extra need of protection
 - Shops, jeweller's, watch-maker's, fur-dealer's, etc
 - Warehouses: electronics, cigarettes, weapons, valuable goods etc
 - Offices: server rooms, computer centres, show rooms
 - Building sheds, base stations, distribution plants, oil platforms



Indusec

Applications

- Objects with an extra need of protection
 - Boats, cars and caravans
 - ATMs and other money containing machines
 - Plasmascreens and other valuable objects



Indusec

Applications

- Other applications
 - Warning device
 - Mines
 - Horn (Military tanks)
 - Hazardous areas, to protect people
 - For unauthorized people: power stations, signal tower, petrochemical plants etc
 - Gas leaks, laboratory accidents etc

