

## Key Benefits:

- *Natural listening experience*
- *Real-time application*
- *Powerful and effective*
- *Customizable usage*
- *High flexibility & control*
- *MCAP compatibility*

## Best Uses:

- *Real-time surveillance*
- *Processing multi-track recordings*
- *Large, open areas*
- *Surveillance vans*
- *Combined with amplifiers & Knowles mics*
- *Covert installations*

## Who Needs This?

- *Live surveillance teams*
- *Technical investigators*
- *CI & TSCM operators*
- *Intelligence teams*
- *Private Investigators*
- *National & regional LE agencies*

For more information or to receive a price quote, visit the DAC website at [www.dacaudio.com](http://www.dacaudio.com) or send us an email at [sales@dacaudio.com](mailto:sales@dacaudio.com).

THE POWER TO HEAR –  
THE POWER TO CONVICT™

# SpotMic

## Multiple beam microphone array processor



Audio collection in large, open areas can often require pinpoint accuracy to isolate specific audio sources. Only SpotMic delivers the technology to electronically steer multiple beams through a sound field and capture targeted audio signals in real time!

## Key Features:

- *Provides a high-gain electronic beam steering capability*
- *Steers three separate beams from one set of microphones*
- *Supports a wide variety of custom microphone arrays, handling up to 96 microphones on 16 channels of input*
- *Unique stereo beam mode for a natural listening experience*
- *Offers hardware and software based steering controls for maximum flexibility*
- *3-D beam forming (azimuth, elevation, and distance) available under software control*
- *Can be used in real-time surveillance or post-processing of multi-track recordings*
- *Compatible with the DAC Multi-Channel Audio Processor (MCAP) and Personal Computer Audio Processor (PCAP II Plus), both of which provide reference & noise cancellation in real-time*
- *Available as a stand-alone processor or in kit form with amplifiers and Knowles-type microphones*
- *Rack mountable for laboratory or vehicle installation*



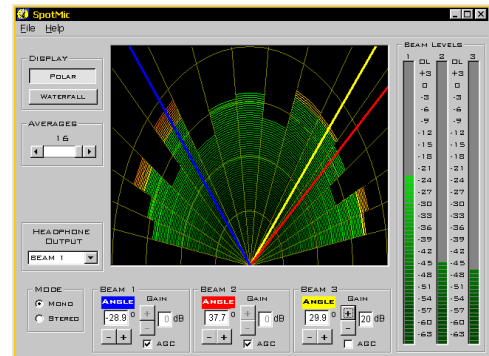
**DIGITAL AUDIO CORPORATION**

A DRI Company

4018 PATRIOT DRIVE, SUITE 300 | DURHAM, NC 27703 USA  
PH: 919-572-6767 | FAX: 919-572-6786

**ANALOG**

- Microphone Inputs**
- Two 25-pin DSUB connector interfaces (Tascam format)
  - Supports 8 differential line level inputs per channel (16 channels total)
  - 25k ohm input impedance per channel
- Line Inputs**
- Two rear-panel RCA jacks, single ended
  - 10k ohm input impedance
- Line Outputs**
- Four rear-panel RCA jacks, single ended
  - 600 ohm output impedance
  - 2.0 Vrms at full scale
- Phone Output**
- Dual ¼" stereo headphone jacks
  - Selectable monitoring source
- Bandwidth**
- 7.5 kHz
- Analog Conversions**
- 24-bit stereo A/D and D/A
  - Sigma-delta technology
- Dynamic Range**
- > 120 dB

**DIGITAL PROCESSING**

- Microprocessor**
- Four ADSP-21062 SHARC® processors for beam forming
  - One ADSP-21062 SHARC® processor for interface control and hosting
- Beam-Forming**
- Three beams (or one stereo beam and one mono beam)
  - Adjustable azimuth (0.1 degree increments)
  - Adjustable gain (1 dB increments)
  - Adjustable elevation (0.1 degree increments), software control only
  - Adjustable distance (0.5 meters to infinity), software control only
  - 30<sup>th</sup> order, digital lowpass filters for fractional delays
  - Memory based sample delay lines (200 deep)
- Memory**
- Two 512K x 8 flash memory for program and coefficient storage
- Computer Interface**
- RS232 serial interface for system control

**GENERAL**

- Host computer**
- Requires Windows® 95/ and higher - laptop or desktop system
  - Minimum 640 x 480 screen resolution and available serial port
- Enclosure**
- 17 W x 3.5 H x 12 D inches black aluminum
  - Optional rack mount kit available
- Power**
- 90-264 VAC, 47-63 Hz at 2.5 A (max)

**DIGITAL AUDIO CORPORATION**

A DRI Company

4018 PATRIOT DRIVE, SUITE 300 † DURHAM, NC 27703 USA  
 PH: 919-572-6767 † FAX: 919-572-6786