



**American Technology**  
CORPORATION

*Shaping the future of sound™*

## Mounting Brackets for HSS by OmniMount®

The Model S220A units are supplied with two mounting studs (bolts) protruding from the center of the rear of the device.

The following OmniMount devices will bolt directly to the rear of the HSS unit. (Note: All Series 20.5 OmniMount devices will attach to the S220A units.



For HSS units  
model # S220A

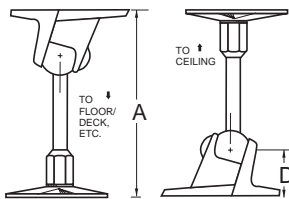
You can "Download Detailed Specifications" for additional models and options by visiting:

<http://www.omnimount.com/product.asp?p=54>

### OmniMount Model # 20.5 STX-MP BLACK

(most common usage)

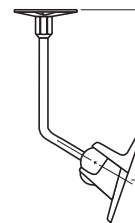
**STX-MP**  
ST WITH MOUNTING  
PLATE



	20.5 SERIES
A	6 5/8" 168.3 mm
B	6 1/2" 165.1 mm
C	7 1/2" 190.5 mm
D	1 3/4" 44.5 mm

### OmniMount Model # 20.5 CA BLACK

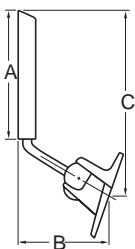
**CA**  
CEILING  
(HORIZONTAL  
SURFACE) TO BACK  
OR SIDE OF SPEAKER



	20.0 SERIES
A	6 1/4" 158.8 mm
B	4 5/8" 117.5 mm
C	9 1/2" 241.3 mm
D	9" 228.6 mm
E	10" 254.0 mm

### OmniMount Model # 20.5 WA BLACK

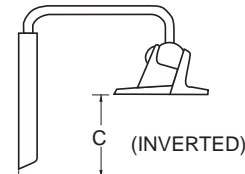
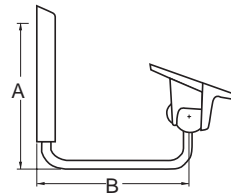
**WA**  
WALL (VERTICAL SURFACE) TO  
BACK OR SIDE OF SPEAKER  
(VERTICAL SURFACE)



	20.0 SERIES
A	6 1/4" 158.8 mm
B	4 5/8" 117.5 mm
C	9 1/2" 241.3 mm
D	9" 228.6 mm
E	10" 254.0 mm

### OmniMount Model # 20.5 WB BLACK

**WB**  
WALL (VERTICAL SURFACE) TO  
BOTTOM OR TOP OF SPEAKER  
(HORIZONTAL SURFACE) MAY BE  
USED INVERTED

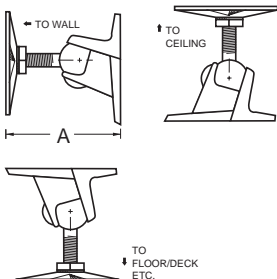


	20.0 SERIES
A	7 3/8" 187.3 mm
B	7" 177.8 mm
C	3 1/8" 79.4 mm

### OmniMount Model # 20.5 ST-MP BLACK

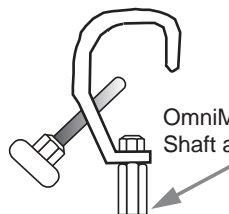
(mounts close to the wall, minimum ability to tilt HSS)

**ST-MP**  
ST WITH MOUNTING  
PLATE

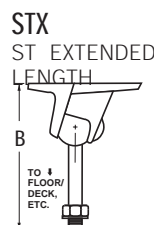


	20.5 SERIES
A	3 7/8" 98.4 mm
B	3 7/8" 98.4 mm
C	4 3/4" 120.7 mm
D	1/2" 12.7 mm

### OmniMount Model # 20.5 C-CLAMP



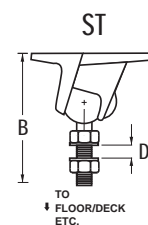
OmniMount Ball  
Shaft attaches here.



	20.5 SERIES
A	6 5/8" 168.3 mm
B	6 1/2" 165.1 mm
C	7 1/2" 190.5 mm
D	1 3/4" 44.5 mm

WALL (VERTICAL SURFACE) TO BACK  
OR SIDE OF SPEAKER (VERTICAL  
SURFACE) OR CEILING/ FLOOR  
(HORIZONTAL SURFACE) TO TOP OR  
BOTTOM OF SPEAKER (HORIZONTAL  
SURFACE)

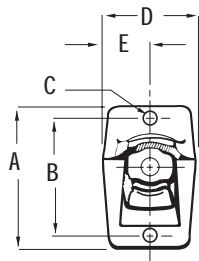
**\*C-Clamps Require  
# 20.5 ST Ball Shaft Mount  
or # 20.5 STX Ball Shaft Mount**



	20.5 SERIES
A	3 7/8" 98.4 mm
B	3 7/8" 98.4 mm
C	4 3/4" 120.7 mm
D	1/2" 12.7 mm

# ADDITIONAL MEASUREMENT INFORMATION

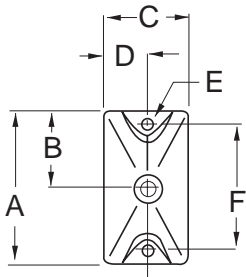
## OmniMount Clamp Assembly



This part attaches to the rear of the HSS unit.

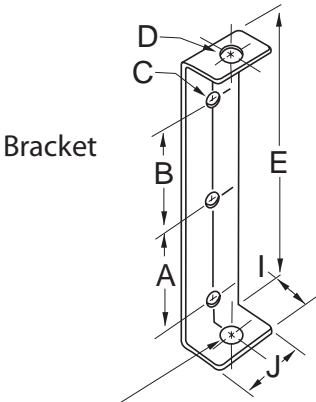
	20.5 SERIES 2 HOLE
A	3 5/8" 92.0 mm
B	3" 76.2 mm
C	1/4" 6.4 mm
D	2 3/16" 55.6 mm
E	1 3/32" 27.8 mm

This part attaches to the wall, ceiling, or floor.  
(for model: STX-MP, CA, & ST-MP)



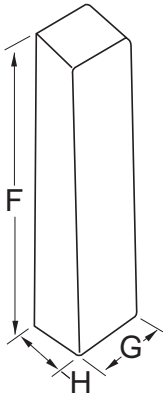
	20.5 SERIES
A	3 3/16" 81.0 mm
B	1 19/32" 40.5 mm
C	2 1/4" 57.2 mm
D	1 1/8" 28.6 mm
E	1/4" 6.4 mm
F	2 9/16" 65.1 mm
G	NA

This part attaches to the wall: (for model: WA & WB)



For 30.0/60.0 WBX models diameter is 3/4".

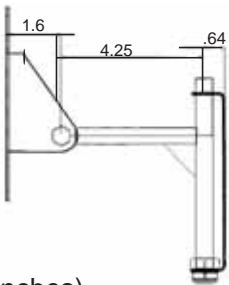
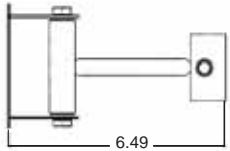
Bracket Cover



	20.5 - 30.0 SERIES
A	2 1/8" 53.9 mm
B	2" 50.8 mm
C	5/16" 7.9 mm
D	7/16"-1/2" 11.1 mm-12.7 mm
E	5 7/16" 138.1 mm
F	6 3/16" 157.2 mm
G	1 13/16" 46.0 mm
H	1 1/8" 28.6 mm
I	1 1/16" 27.0 mm
J	1 5/8" 41.3 mm

## Alternative OmniMount Model

Model #VM-1  
Pan and Tilt Mount



(In Inches)

**OmniMount MSRP Price List\***

As of 2/26/03

\* Dealer Pricing Is Available for ATC Dealers & Distributors

DESCRIPTION	ATC Part #	Omnimount Part #	MSRP
Standard Mount	02-10071-8078	20.5 STX-MP BLACK	\$47.95
Alternate Ceiling Mount	02-10071-CA20	20.5 CA BLACK	\$49.95
Alternate Wall Mount	02-10071-WA20	20.5 WA BLACK	\$49.95
Alternate Wall Mount	02-10071-WB20	20.5 WB BLACK	\$49.95
Short Shaft Mount	02-10071-9716	20.5 ST-MP BLACK	\$47.95
C-Clamp for Truss mounting	02-10071-CLMP	20.5 C-CLAMP	\$24.99
BallShaft Mount (short)	02-10071-8030	20.5 ST BLACK	\$43.95
BallShaft Mount (long)	02-10071-0422	20.5 STX BLACK	\$43.95
Pan and Tilt Mount	02-10071-VM01	WM-1	\$38.00

