

ANTHRAX BIOWEAPON

DO NOT MAKE THIS OR CULTIVATE THIS SUBSTANCE.

BACILLUS ANTHRACIS, NO OTHER NAME CREATES SUCH FEAR AS THIS

THE SPORES OF THIS BACTERIA CAN SURVIVE FOR YEARS IN ALLUVIAL SOIL.

FLOOD PLAINS, RIVER VALLEYS, WASHES THAT ARE MOIST YEAR ROUND UNDER GROUND. THIS IS WHERE YOU WILL FIND THIS BACTERIA'S SPORES.

SYMPTOMS: GRUESOME SPASMS AND CONVULSIONS...AS IF THEY WERE POSSESSED BY DEMONS.

DEATH SOON TO FOLLOW.

ANTHRAX IS KNOWN AS A ZOONTIC DESEASE, FROM THE GREEKS.

THE LOWER MISSISSIPPI RIVER VALLEY IS A WELL DOCUMENTED HAVEN FOR THE DISEASE.

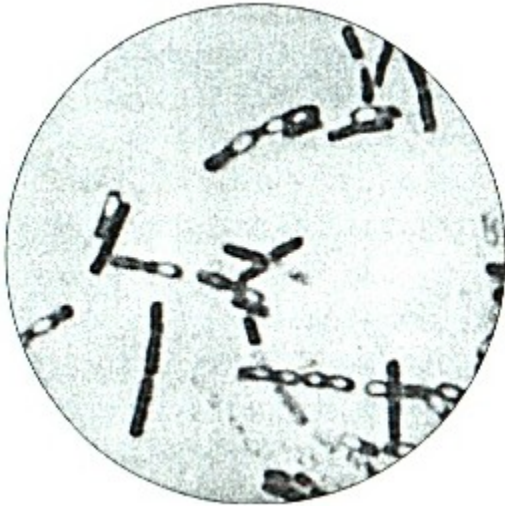
A RIVER'S FLOOD PLAIN IS A GOOD HAVEN ALSO.

LOUISIANA IS ANOTHER GOOD PLACE TO GET THE BACTERIA.

LIKE MOST BACTERIA, FUNGUS, VIRUS, ETC...YOU SHOULD BE ABLE TO FIND IT IF YOU LOOK HARD AND LONG ENOUGH. TRIAL AND ERROR.

ALL YOU NEED IS A MICROSCOPE THAT WILL MAGNIFY AT LEAST 1000 TIMES. YOU CAN OBTAIN ONE FROM INFO-LABS.COM'S SAFETY PRODUCTS FOR SALE. WE SELL A TASCOS BRAND THAT IS VERY HIGH QUALITY AND WILL MAGNIFY UPTO 1600 TIMES. THIS WILL ALLOW YOU TO IDENTIFY THE BACTERIA BY LOOKS...

HERE IT IS, THE FIRST BACTERIA EVER SEEN BY MANKIND:::::



MAGNIFIED 1000 TIMES AND ENLARGED.

NOTE IT'S DISTINCTIVE CHAIN LINK APPEARANCE...

THIS MAKES IT VERY EASY TO IDENTIFY AND ISOLATE.

IT ALSO HELPS TO USE GRAM STAINS TO MAKE IT VISIBLE UNDER THE MICROSCOPE.

IT IS ALWAYS COMMON TO PLACE THIS SYMBOL ON ANY CONTAINER WHICH CONTAINS HAZARDOUS MATERIALS SUCH AS ANTHRAX...JUST SO SOMEONE DOESN'T MISTAKE IT FOR COTTAGE CHEEZE:::



SPORES ENTER THE HUMAN BODY BY MEANS OF CUTS (CUTANEOUS ANTHRAX, USUALLY NOT FATAL), THE BREATH, OR BAD MEAT, THEN MULTIPLY AND PRODUCE ENOUGH TOXIN WITHIN A WEEK OR SO TO INJURE SURROUNDING CELLS AND TISSUE, ESPECIALLY IF INHALED (PULMONARY ANTHRAX, RARE BUT QUITE DEADLY).

ONCE YOU FIND AND ISOLATE THE BACTERIA YOU CAN GROW IT IN A VERY HIGH PROTEIN MEAT...AND YES IT WILL GROW IN ALMOST ANY CONDITION...JUST FIND IT AND PLANT IT LIKE A SEED IN CHEAP BEEF OR SOME OTHER TYPE OF CHEAP MEAT.

GAS MASKS AND FACE SHIELDS, RUBBER GLOVES AND APRINS SHOULD BE WORN WHENEVER DEALING WITH SUCH HAZARDS.

CONSTANT AIR CIRCULATION AND FILTRATION ALONG WITH AIR PURIFIERS AND DISCRETNESS IN LOCATION, NOT IN A BACK YARD OR SHED.

DO NOT MAKE THIS SUBSTANCE...WE WILL NOT BE HELD LIABLE IN ANY WAY FOR THE USE OR MISUSE OF THIS INFORMATION. IF YOU MAKE THIS MATERIAL YOU WILL BE HELD SOLEY LIABLE FOR ANY LEGALITIES PERTAINING TO IT.

PLEASE DO NOT MAKE OR CULTIVATE THIS SUBSTANCE.
