

CALLER ID/RETURN BLOCKER

WE SELL COMPLETED UNITS FOR \$25.00 + \$3.50S/H.

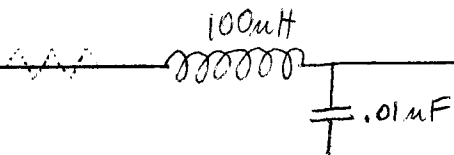
FIRST UNDERSTAND THAT YOU MUST CHANGE IMPEDANCE OF THE LINE IN ORDER TO STOP SMALL TRACES, YOU MUST CHANGE THE CAPACITANCE OF THE LINE TO STOP CALLER ID TRACES / RETURNS AND YOU MUST CHANGE INDUCTANCE OF THE LINE IN ORDER TO STOP CALL RETURN FOR UP TO 10 MIN CALLS.

CALLER ID BLOCKER:

* SOME AREAS ALLOW *67 AS A CALLER ID BLOCKER, THIS IS EASY TO DO...YOU CAN EITHER PUNCH IN THE CODE EACH TIME YOU MAKE A CALL OR YOU CAN BUY A DIGITAL TOY VOICE RECORDER FROM WALMART IN THE TOYS SECTION FOR ABOUT 9.95 AND CONNECT THE MIC INPUT TO THE TONE OUTPUT OF THE SPEAKER FROM THE PHONE, DIAL IN *67 AND MAKE SURE IT IS RECORDING, THERE YOU HAVE IT. HARDWIRE THE DEVICE INTO THE PHONE LINE WITH AN AUDIO ISOLATION TRANSFORMER OR 1:2 OR 1:1 RATIO LOW LOSS TRANSFORMER, THIS WAY ALL YOU HAVE TO DO IS PUSH A BUTTON WHEN EVER YOU DON'T WANT CALLER ID TO CATCH YOU. YOU COULD ALSO SET IT UP SO IT WILL AUTOMATICALLY TURN ON EACH TIME YOU PICK UP ANY LINE IN THE HOUSE. PLACE A ZENER VOLTAGE REGULATOR ON THE LINE SO IT MAKES IT ABOUT 9VDC, CONNECT THIS TO THE DEVICE POWERSUPPLY THAT YOU BUILD OR TO A RELAY THAT WILL SWITCH THE UNIT ON AND OFF WITH THE PICK UP OF THE LINE.

CALLER RETURN / TRACE BLOCKER:

IN ORDER TO STOP TRACES YOU MUST HAVE A CAPACITIVE/INDUCTIVE FILTER SET UP. PLACE A 100uH INDUCTOR IN SERIES WITH THE LINE. PLACE A .01uF CAP IN PARALLEL WITH THE LINE, YOU MAY NEED TO PLACE A 200 OHM 5 WATT RESISTOR IN LINE BEFORE THE CAP, BUT NOT BETWEEN THE CAP AND INDUCTOR. SEE DIAGRAM:



TRACE BLOCKER EXCLUSIVE:

TRACES WORK OFF ONE OR TWO THINGS OF MANY. IMPEDANCE, CAPACITANCE, INDUCTANCE AND CONDUCTANCE. UNFORTUNATELY ALL ASPECTS CAN NOT BE COVERED AT ONE TIME IN ANY ONE CIRCUIT. WE MUST FOCUS ON THE MAJORLY USED ONES.

BY USE OF A CAP/IND + LRC FILTER NETWORK SETUP, WE CAN BLOCK MOST OF THE TYPES OF TRACES USED. YOU MAY NEED TO ADJUST THE IMPEDANCE IN ORDER TO DIAL OUT THEN READJUST IT HIGH ONCE YOU ARE TALKING OR CONNECTED, IT ALL DEPENDS ON YOUR PHONE LINES CURRENT IMPEDANCE. YOU MAY WISH TO EXPERIEMENT WITH DIFFERENT VALUES OTHER THAN OURS, WE ARE BASING OURS OFF OF THE PACIFIC BELL WEST COAST SYSTEM.

PLACE A 50μH INDUCTOR IN SERIES WITH THE LINE. PLACE A .0018μF CAP IN SERIES AFTER THE INDUCTOR WITH THE LINE.

PLACE A 50 OHM 5 WATT RESISTOR IN SERIES WITH THE LINE. PLACE A 10μF 200V CAPACITOR IN SERIES WITH THE LINE. PLACE A COIL OF 40GA WIRE AT 20KOHMS TOTAL RESISTANCE IN PARALLEL WITH THE LINE.

SEE DIAGRAM BELOW:

