

PULSE OSCILLATOR KIT/PLANS

THIS DEVICE UTILIZES A MONOLITHIC OSCILLATOR OF WHICH THE SIGNAL IS FED INTO A HIGH SPEED AMPLIFIER. FROM THERE THE SIGNAL CAN BE USED IN A VARIETY OF ELECTRONIC APPLICATIONS. THIS SIGNAL CAN BE FURTHER AMPLIFIED USING MORE STAGES OF HIGH SPEED AMPLIFIERS. THIS DEVICE WILL GIVE YOU A WIDE RANGE OF VOLTAGES, FREQUENCIES, AND CURRENT. BELOW WE WILL SHOW YOU MANY DIFFERENT CIRCUITS AND APPLICATIONS. WE WILL ALSO SHOW YOU HOW TO BUILD A HIGH FREQUENCY AMPLIFIER.

PARTS LIST FOR MULTIPLE CIRCUITS

Q1=2SC2498 NPN TRANSISTOR

R1=1K OHM

C1=.001Uf DISC

CT=1uf ELECT & 10uF ELECT & 100uF ELECT & 200uF ELECT

RS=1K & 2K

POT1=10K POT

POT2=4K POT

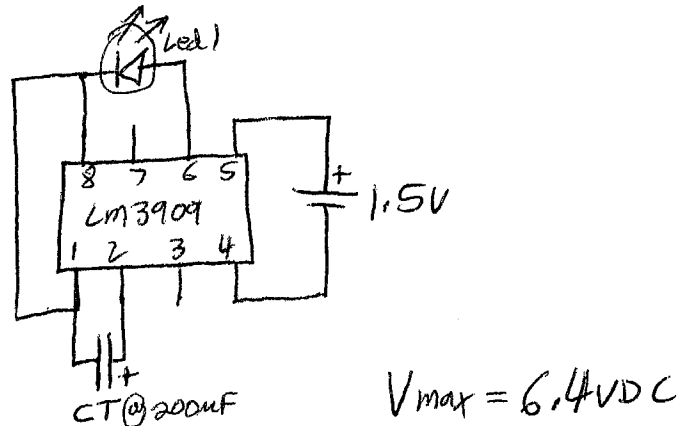
RX1=75 OHM

RX2=2.4K OHM

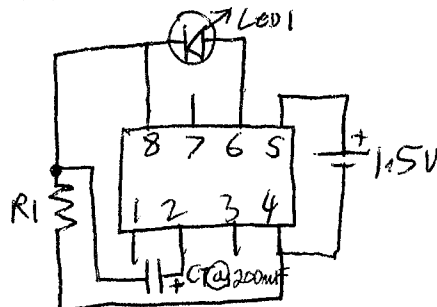
IC1=LM3909

LED1=RED LED

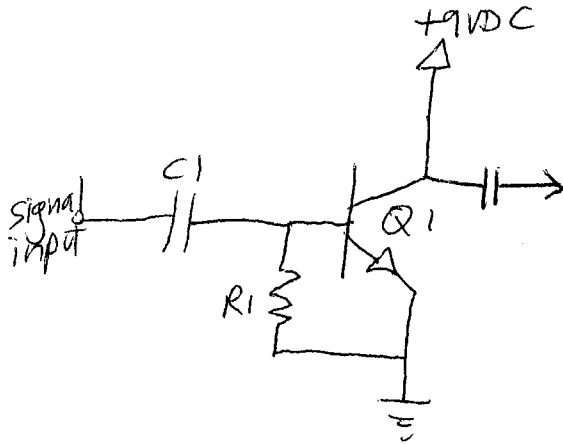
LED FLASHER. WILL FLASH AN LED FOR 5YRS ON ONE D CELL.



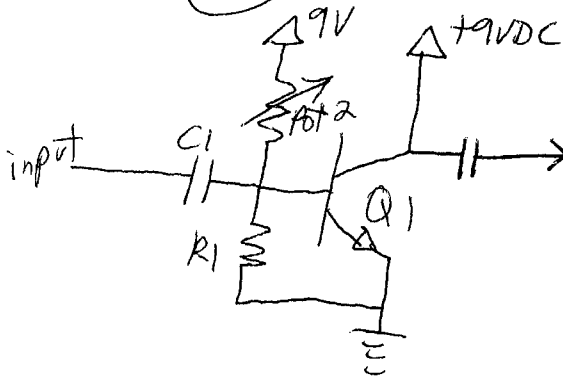
FAST BLINKER.



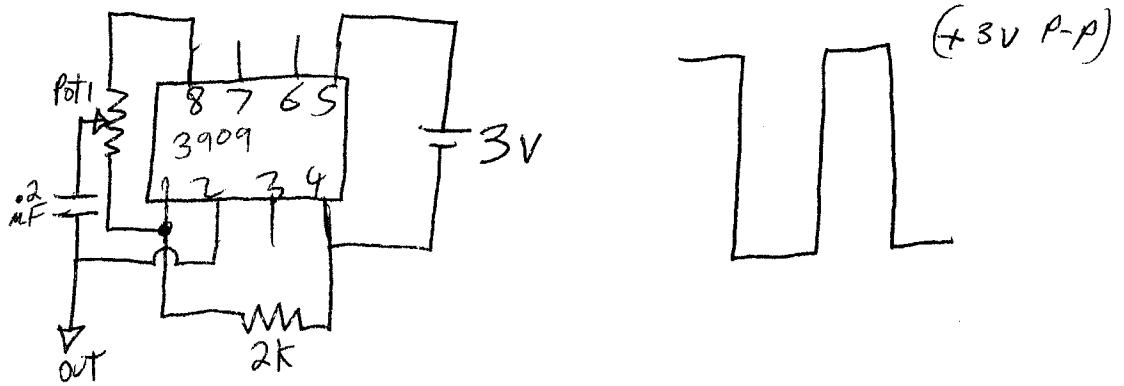
HIGH FREQUENCY AMP.



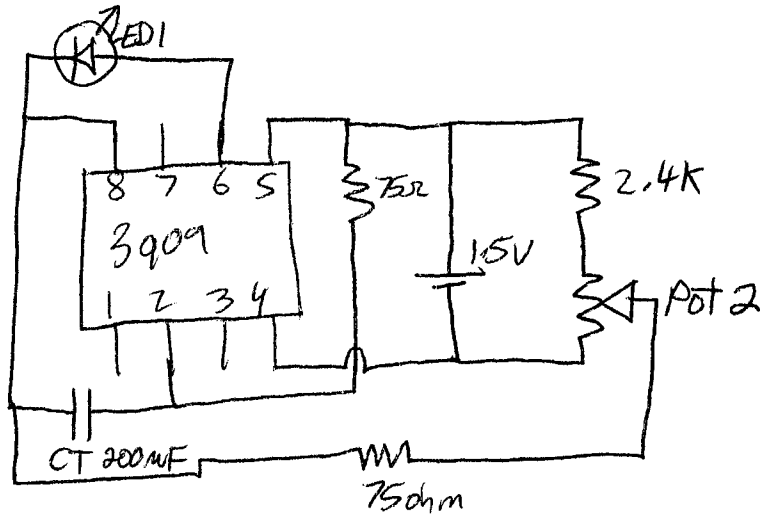
OR



1KHZ SQUARE WAVE OSCILLATOR



VARIABLE FLASHER



VARIABLE OSCILLATOR.

