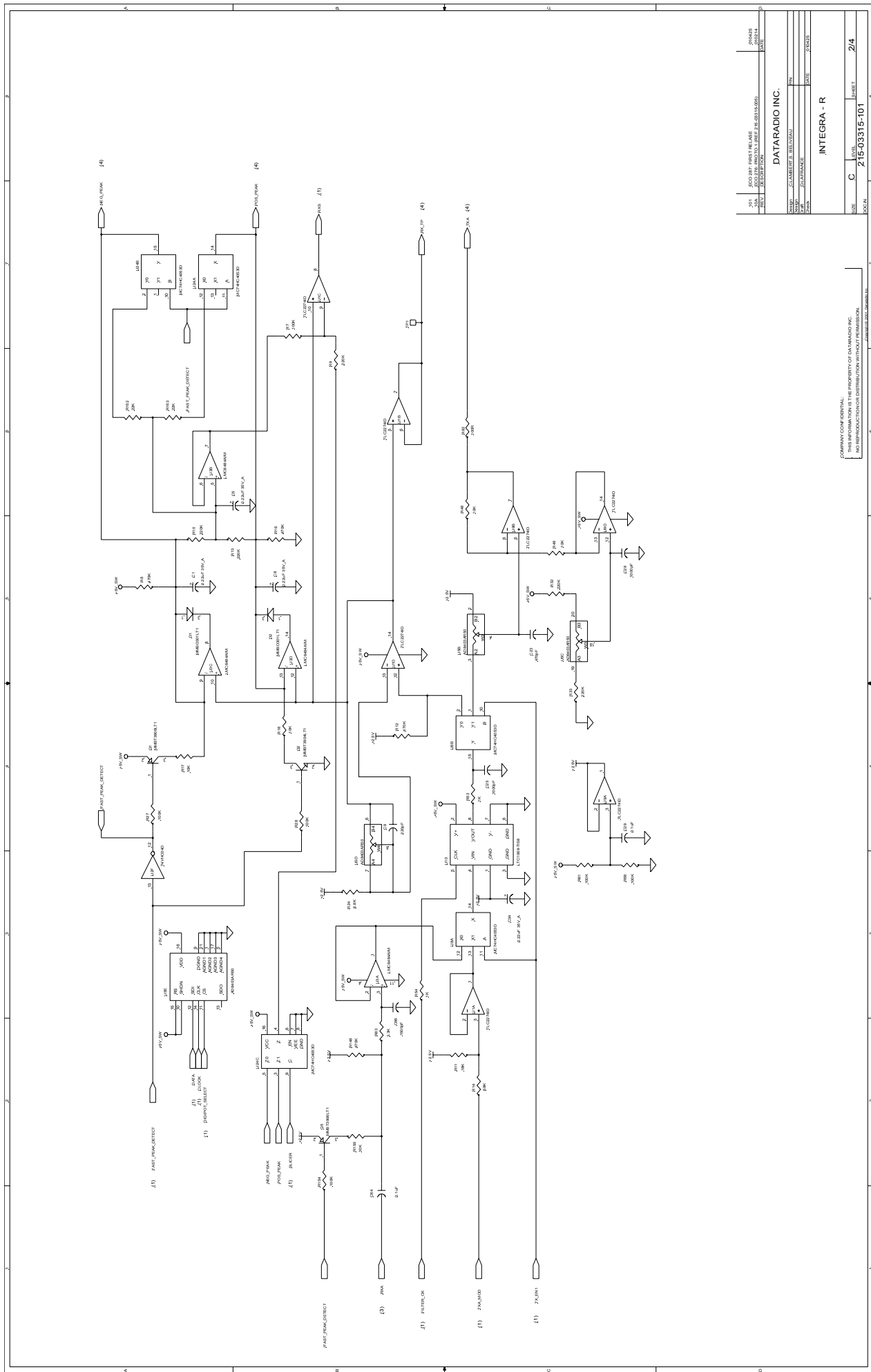


DRAWING CONVENTIONS:
 THIS INFORMATION IS THE PROPERTY OF DATARADIO INC.
 NO REPRODUCTION OR DISTRIBUTION WITHOUT PERMISSION.

DATARADIO INC.
 1300 15th Street, Suite 100
 Denver, CO 80202
 TEL: 303.733.1111
 FAX: 303.733.1112
 WWW: www.dataradio.com

**INTEGRA - R
 LOGIC BOARD**

REV: B
 LEVEL: 215-03315-101
 SHEET: 1/4



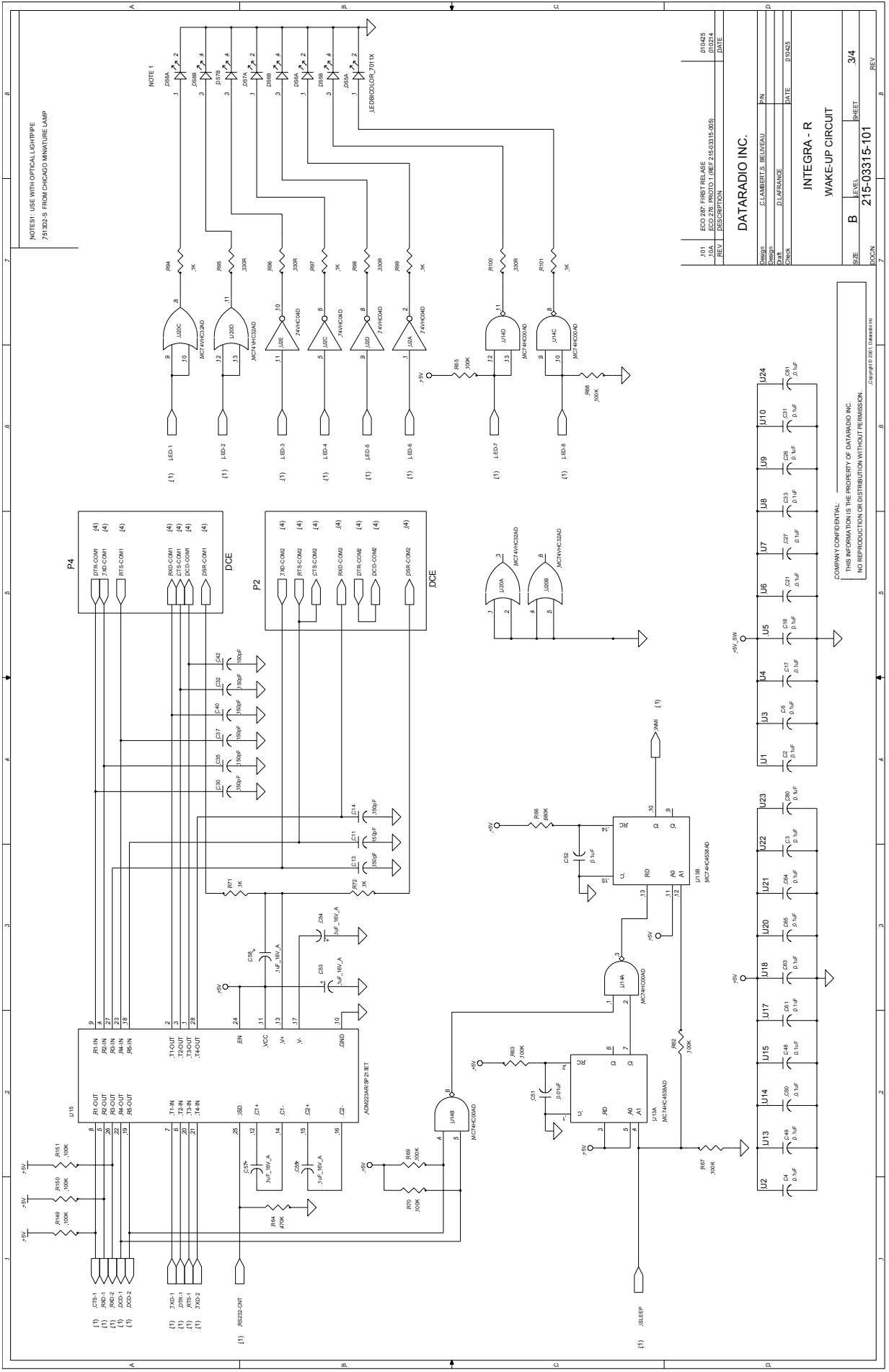
REV. 1	DATE	08/11/00
REV. 2	DATE	08/11/00
REV. 3	DATE	08/11/00
REV. 4	DATE	08/11/00
REV. 5	DATE	08/11/00
REV. 6	DATE	08/11/00
REV. 7	DATE	08/11/00
REV. 8	DATE	08/11/00
REV. 9	DATE	08/11/00
REV. 10	DATE	08/11/00
REV. 11	DATE	08/11/00
REV. 12	DATE	08/11/00
REV. 13	DATE	08/11/00
REV. 14	DATE	08/11/00
REV. 15	DATE	08/11/00

DATARADIO INC.

INTEGRA - R

SIZE	LEVEL	SHEET
C	3	2/4
POE-N	POE-N	POE-N

COMPANY CONFIDENTIAL:
THIS INFORMATION IS THE PROPERTY OF DATARADIO INC.
NO REPRODUCTION OR DISTRIBUTION OF THIS DOCUMENT IS PERMITTED WITHOUT WRITTEN PERMISSION.



NOTE 1
USE WITH OPTICAL TRIPE
75302-S FROM CHICAGO MINIATURE LAMP

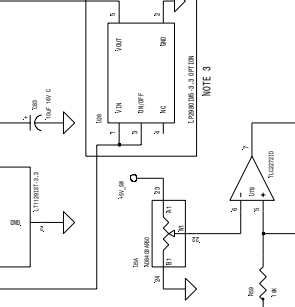
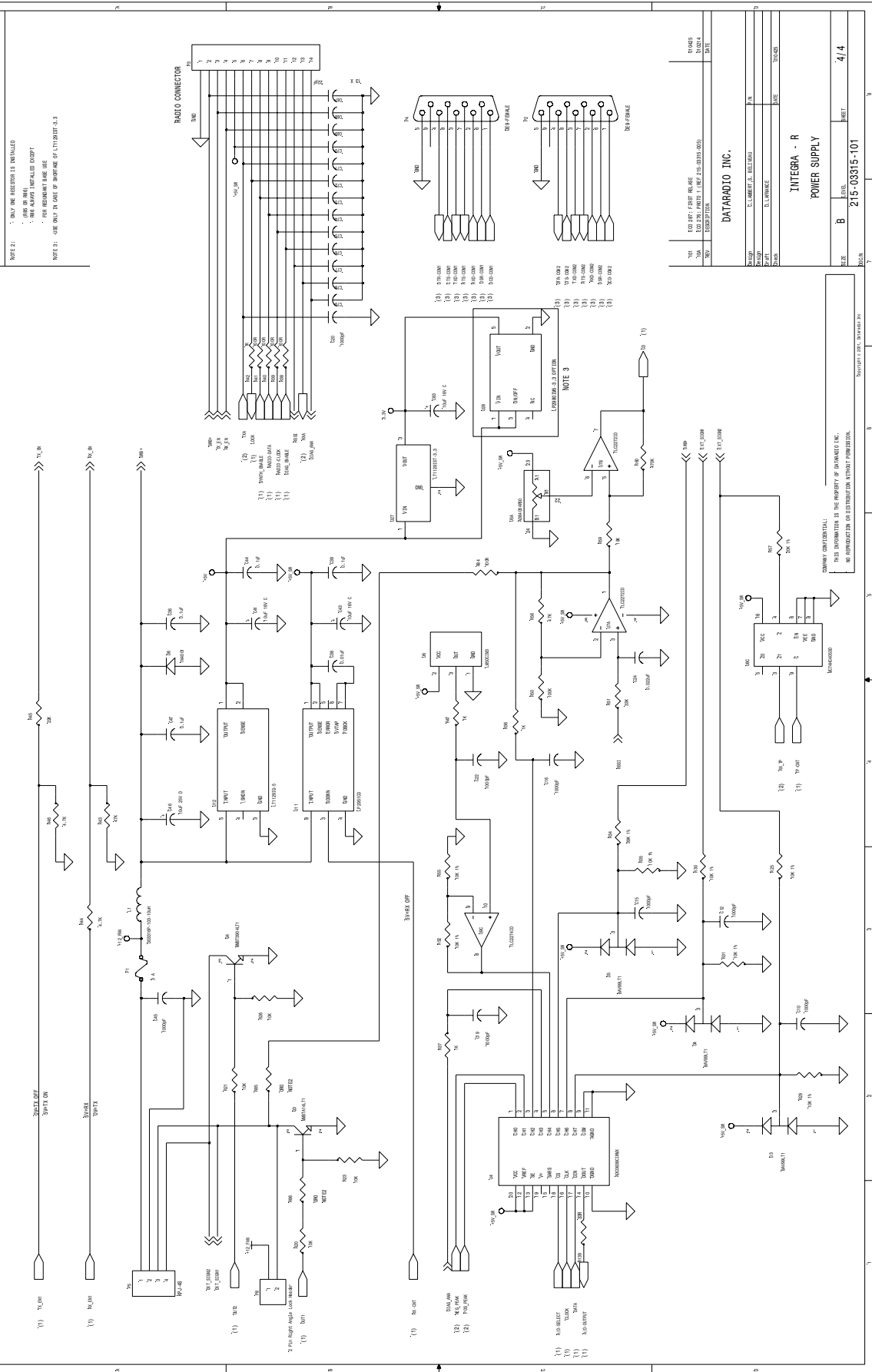
DESIGN	ECO 250 FIRST USE	DATE	11/10/96
REV	ECO 250 REV 1	DATE	11/10/96
DESIGN	ECO 250 REV 1	DATE	11/10/96
REV	ECO 250 REV 1	DATE	11/10/96

DESIGN	C.LAMBERTS, BELLEVUE	PN	
CHKD	D.LAFRANCE	DATE	11/10/96
REV		DATE	11/10/96

COMPANY	DATARADIO INC.
PROJECT	INTEGRA - R
SHEET	3/4
REV	B
DOCNO	215-03315-101

COMPANY CONFIDENTIAL
THIS INFORMATION IS THE PROPERTY OF DATARADIO INC.
NO REPRODUCTION OR DISTRIBUTION WITHOUT PERMISSION.

NOTE 2: 1. ONLY ONE RESISTOR IS INSTALLED
2. WIRE ON THE UNINSTALLED PROXY
3. FOR INSTANT SAME USE
NOTE 3: USE ONLY IN CASE OF SHORTAGE OF U174000-3.3



NO.	REV.	DATE	BY	CHKD.
100	1	1975	J. L. BENTLEY	
101	2	1975	J. L. BENTLEY	
102	3	1975	J. L. BENTLEY	
103	4	1975	J. L. BENTLEY	
104	5	1975	J. L. BENTLEY	
105	6	1975	J. L. BENTLEY	
106	7	1975	J. L. BENTLEY	
107	8	1975	J. L. BENTLEY	
108	9	1975	J. L. BENTLEY	
109	10	1975	J. L. BENTLEY	
110	11	1975	J. L. BENTLEY	
111	12	1975	J. L. BENTLEY	
112	13	1975	J. L. BENTLEY	
113	14	1975	J. L. BENTLEY	
114	15	1975	J. L. BENTLEY	
115	16	1975	J. L. BENTLEY	
116	17	1975	J. L. BENTLEY	
117	18	1975	J. L. BENTLEY	
118	19	1975	J. L. BENTLEY	
119	20	1975	J. L. BENTLEY	
120	21	1975	J. L. BENTLEY	
121	22	1975	J. L. BENTLEY	
122	23	1975	J. L. BENTLEY	
123	24	1975	J. L. BENTLEY	
124	25	1975	J. L. BENTLEY	
125	26	1975	J. L. BENTLEY	
126	27	1975	J. L. BENTLEY	
127	28	1975	J. L. BENTLEY	
128	29	1975	J. L. BENTLEY	
129	30	1975	J. L. BENTLEY	
130	31	1975	J. L. BENTLEY	
131	32	1975	J. L. BENTLEY	
132	33	1975	J. L. BENTLEY	
133	34	1975	J. L. BENTLEY	
134	35	1975	J. L. BENTLEY	
135	36	1975	J. L. BENTLEY	
136	37	1975	J. L. BENTLEY	
137	38	1975	J. L. BENTLEY	
138	39	1975	J. L. BENTLEY	
139	40	1975	J. L. BENTLEY	
140	41	1975	J. L. BENTLEY	
141	42	1975	J. L. BENTLEY	
142	43	1975	J. L. BENTLEY	
143	44	1975	J. L. BENTLEY	
144	45	1975	J. L. BENTLEY	
145	46	1975	J. L. BENTLEY	
146	47	1975	J. L. BENTLEY	
147	48	1975	J. L. BENTLEY	
148	49	1975	J. L. BENTLEY	
149	50	1975	J. L. BENTLEY	
150	51	1975	J. L. BENTLEY	
151	52	1975	J. L. BENTLEY	
152	53	1975	J. L. BENTLEY	
153	54	1975	J. L. BENTLEY	
154	55	1975	J. L. BENTLEY	
155	56	1975	J. L. BENTLEY	
156	57	1975	J. L. BENTLEY	
157	58	1975	J. L. BENTLEY	
158	59	1975	J. L. BENTLEY	
159	60	1975	J. L. BENTLEY	
160	61	1975	J. L. BENTLEY	
161	62	1975	J. L. BENTLEY	
162	63	1975	J. L. BENTLEY	
163	64	1975	J. L. BENTLEY	
164	65	1975	J. L. BENTLEY	
165	66	1975	J. L. BENTLEY	
166	67	1975	J. L. BENTLEY	
167	68	1975	J. L. BENTLEY	
168	69	1975	J. L. BENTLEY	
169	70	1975	J. L. BENTLEY	
170	71	1975	J. L. BENTLEY	
171	72	1975	J. L. BENTLEY	
172	73	1975	J. L. BENTLEY	
173	74	1975	J. L. BENTLEY	
174	75	1975	J. L. BENTLEY	
175	76	1975	J. L. BENTLEY	
176	77	1975	J. L. BENTLEY	
177	78	1975	J. L. BENTLEY	
178	79	1975	J. L. BENTLEY	
179	80	1975	J. L. BENTLEY	
180	81	1975	J. L. BENTLEY	
181	82	1975	J. L. BENTLEY	
182	83	1975	J. L. BENTLEY	
183	84	1975	J. L. BENTLEY	
184	85	1975	J. L. BENTLEY	
185	86	1975	J. L. BENTLEY	
186	87	1975	J. L. BENTLEY	
187	88	1975	J. L. BENTLEY	
188	89	1975	J. L. BENTLEY	
189	90	1975	J. L. BENTLEY	
190	91	1975	J. L. BENTLEY	
191	92	1975	J. L. BENTLEY	
192	93	1975	J. L. BENTLEY	
193	94	1975	J. L. BENTLEY	
194	95	1975	J. L. BENTLEY	
195	96	1975	J. L. BENTLEY	
196	97	1975	J. L. BENTLEY	
197	98	1975	J. L. BENTLEY	
198	99	1975	J. L. BENTLEY	
199	100	1975	J. L. BENTLEY	

COMMERCIAL: THIS INFORMATION IS THE PROPERTY OF DATARADIO INC. NO REPRODUCTION OR DISTRIBUTION WITHOUT PERMISSION.

DATARADIO INC.
INTEGRA - R
POWER SUPPLY
REV. 1
DATE
PAGE

4/4

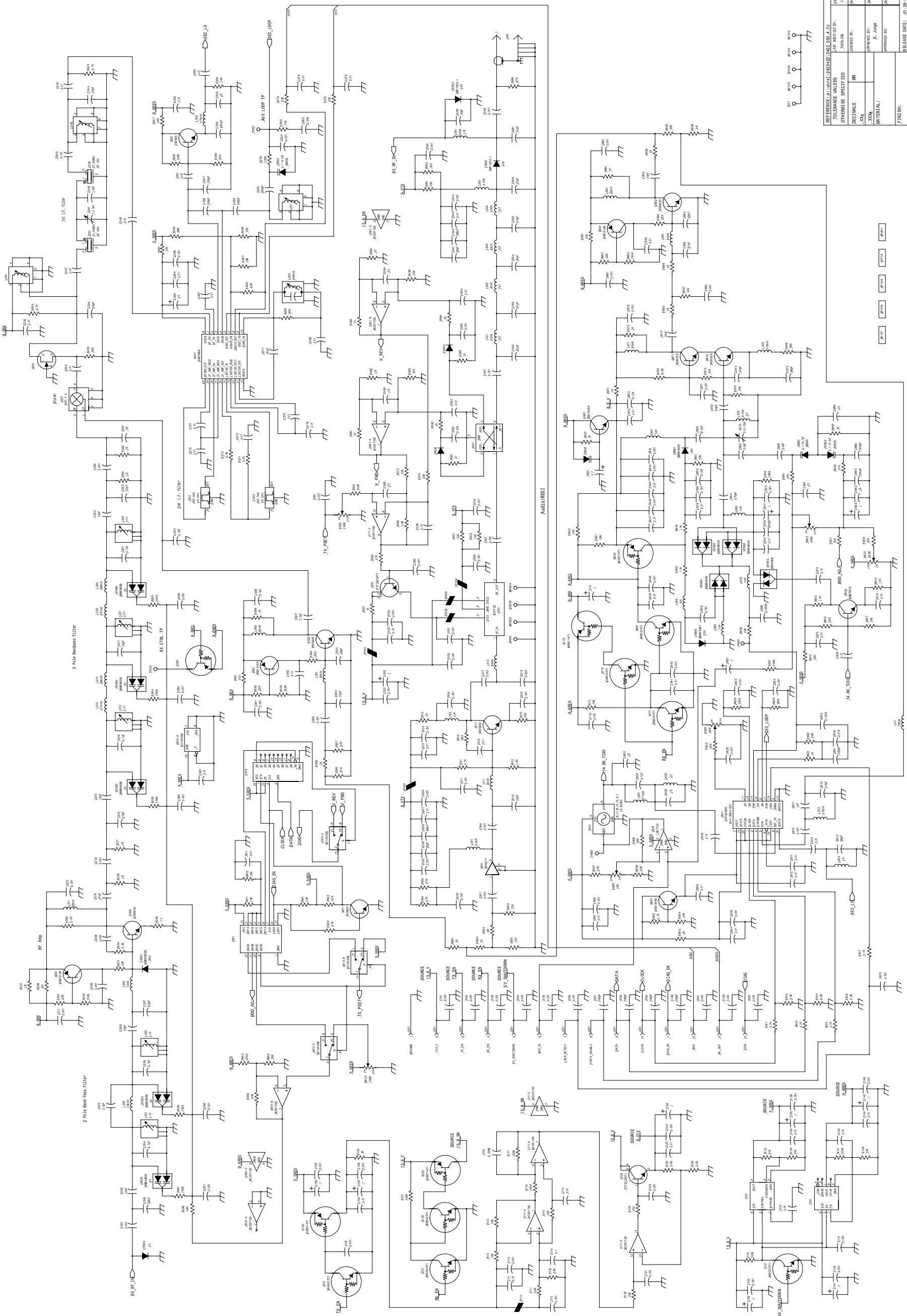
REV	DATE	BY	CHKD
REV 3	10-24-00	TU	
REV 2	05333		

COMPANY CONFIDENTIAL

DATE:	21/1/00	DESIGNED BY:	JUEHLING
DATE:		CHECKED BY:	MM
DATE:	01-29-98	APPROVED BY:	J. JUNG
DATE:		APPROVED BY:	
DATE:	01-28-98	RELEASE DATE:	01-28-98
SCALE:		SHEET:	09/1

REFERENCE: MIL-STD-203	1362	1362	1362
TOLERANCE UNLESS SPECIFIED			
SYMBOLS UNLESS SPECIFIED			
PREFIGURES	MM		
UNIT			
MATERIAL:			
FINISH:			

TITLE:	D-025-3422 VHF Transceiver
SCHEMATIC DIAGRAM	



0.01 0.02 0.05 0.1 0.2 0.5 1 2 5 10 20 50 100 200 500 1000