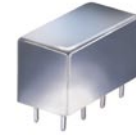


Plug-In Frequency Mixer

SRA-8+

Level 7 (LO Power +7 dBm) 0.0005 to 10 MHz



CASE STYLE: A01
PRICE: \$34.20 ea. QTY (1-9)

+ RoHS compliant in accordance with EU Directive (2002/95/EC)

The +Suffix has been added in order to identify RoHS Compliance. See our web site for RoHS Compliance methodologies and qualifications.

Maximum Ratings

Operating Temperature	-55°C to 100°C
Storage Temperature	-55°C to 100°C
RF Power	50mW
IF Current	40mA

Pin Connections

LO	8
RF	1
IF	3,4 [^]
GROUND	2,5,6,7

[^] pins must be connected together externally

Features

- excellent conversion loss, 5.69 dB typ.
- high L-R isolation, 50 dB typ. L-I isolation, 50 dB typ.
- rugged welded construction
- hermetic

Applications

- IF signal processing
- AM broadcasting radio

Electrical Specifications

FREQUENCY (MHz)	CONVERSION LOSS (dB)	LO-RF ISOLATION (dB)						LO-IF ISOLATION (dB)									
		Mid-Band m		Total Range		L		M		U		L		M		U	
LO/RF f_l - f_u	IF	\bar{X}	σ	Max.	Max.	Typ.	Min.	Typ.	Min.	Typ.	Min.	Typ.	Min.	Typ.	Min.	Typ.	Min.
.0005-10	DC-10	5.69	.11	7.5	8.5	60	50	50	40	45	35	60	50	50	40	45	35

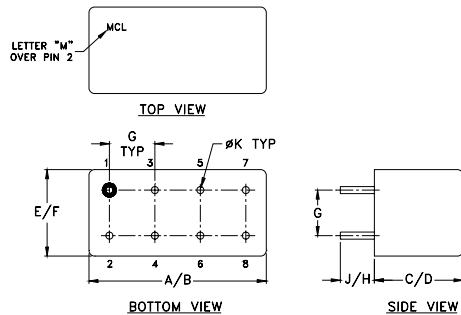
1 dB COMP.: +1 dBm typ.

L = low range [f_l to $10 f_l$]
m = mid band [$2 f_l$ to $f_l/2$]

M = mid range [$10 f_l$ to $f_l/2$]

U = upper range [$f_l/2$ to f_u]

Outline Drawing



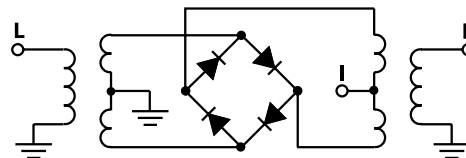
Outline Dimensions (inch/mm)

A	B	C	D	E	F
.770	.800	.385	.400	.370	.400
19.56	20.32	9.78	10.16	9.40	10.16
G	H	J	K	wt	
.200	.20	.14	.031	grams	
5.08	5.08	3.56	0.79	5.2	

Typical Performance Data

Frequency (MHz)		Conversion Loss (dB)	Isolation L-R (dB)	Isolation L-I (dB)	VSWR RF Port (:1)	VSWR LO Port (:1)
RF	LO	LO +7dBm	LO +7dBm	LO +7dBm	LO +7dBm	LO +7dBm
0.001	3.00	5.26	71.79	72.81	1.41	3.30
0.002	3.00	4.96	75.56	77.65	1.37	2.70
0.005	3.01	4.92	73.77	80.99	1.38	2.54
0.01	3.01	4.88	71.40	77.86	1.37	2.46
0.02	3.02	4.84	71.49	76.56	1.37	2.41
0.05	3.05	4.84	72.03	78.05	1.38	2.32
0.10	3.10	4.79	71.80	78.10	1.38	2.29
0.20	3.20	4.88	71.48	77.93	1.38	2.21
0.50	3.50	4.86	71.98	77.73	1.37	2.10
0.70	3.70	4.83	71.60	76.54	1.37	1.98
1.00	4.00	4.88	71.65	75.42	1.37	1.95
1.43	4.43	4.91	71.81	71.58	1.37	1.94
2.00	5.00	4.91	72.01	69.03	1.36	1.96
2.86	5.86	4.97	71.64	64.97	1.37	2.01
4.29	7.29	5.16	71.16	59.46	1.36	2.03
5.00	8.00	5.17	71.48	58.01	1.36	2.02
6.43	9.43	5.18	70.78	54.45	1.36	1.98
7.14	4.14	5.21	70.73	53.39	1.36	1.94
8.57	5.57	5.23	70.34	50.80	1.36	1.92
10.00	7.00	5.22	70.10	48.53	1.35	1.90

Electrical Schematic



Mini-Circuits
ISO 9001 ISO 14001 CERTIFIED

ALL NEW
minicircuits.com

P.O. Box 350166, Brooklyn, New York 11235-0003 (718) 934-4500 Fax (718) 332-4661 For detailed performance specs & shopping online see Mini-Circuits web site



The Design Engineers Search Engine Provides ACTUAL Data Instantly From MINI-CIRCUITS At: www.minicircuits.com

RF/IF MICROWAVE COMPONENTS

REV. A
M98898
SRA-8
DJ/TD/CP/AM
061211
Page 1 of 2

