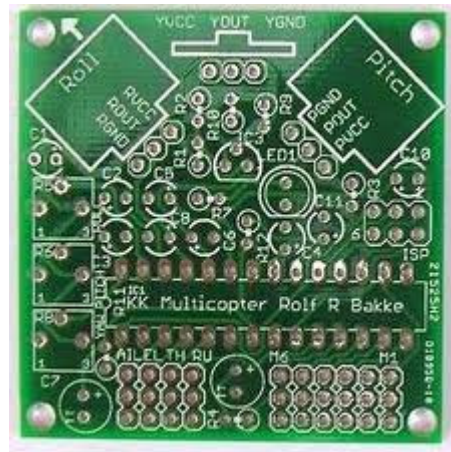


# ✳multicopter

[www.kkmulticopter.com](http://www.kkmulticopter.com)

## KKmulticopter Flight Controller v.6 DIY Kit Component Key

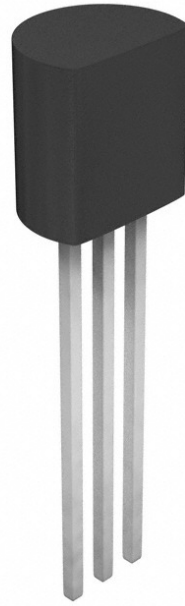
Kkmulticontroller v6 PCB



IC1: Atmega48/88/168/328 (DIL28)



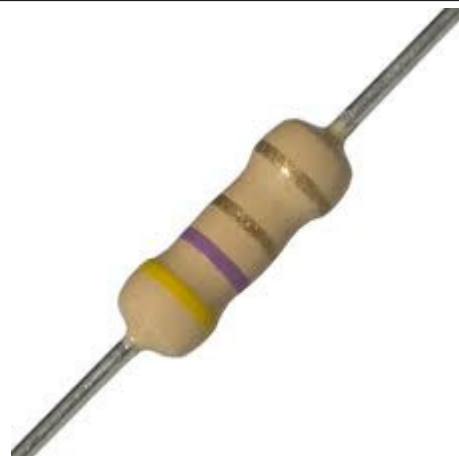
IC3: LM317LZ (TO-92)



R1, R2, R3: 100 Ohm (1/4 Watt)



R4, R12: 4.7 Ohm (1/4 Watt)



R5, R6, R8: 10 kOhm Potmeter (Bourns 3362P)



R7: 680 Ohm (1/4 Watt)



R9: 220 Ohm (1/4 Watt)



R10: 68 Ohm (1/4 Watt)



R11: 4.7 kOhm (1/4 Watt)



C1, C2, C3, C4, C10, C11: 10 uF (Tantalum, at least 6V, 2.54mm pin spacing)



C5, C6, C8: 0.68 uF (Tantalum, at least 6V, 2.54mm pin spacing)



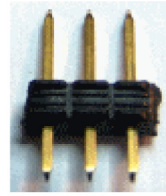
C7, C9: 33 uF (Tantalum, at least 6V, 2.54mm pin spacing)



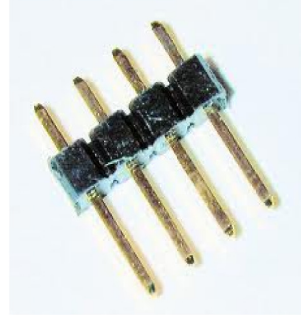
LED1: any 5mm LED



3 Pin ISP header x 2



4 Pin RX header x 3



6 Pin ESC header x 3



3 Pin RX jumper cables x 4

