

D CABINET TENT

DESCRIPTION AND USE

CONTENTS	PAGE
1. GENERAL	1
2. DESCRIPTION	1
3. PRECAUTIONS	3
4. USE	4
5. PLACING	4
6. REMOVAL	7
7. MAINTENANCE	7
8. STORAGE	11

vides adequate light for work operations. The cover is laced securely to a collapsible aluminum frame.

2.03 The frame (Fig. 2) consists of rigid front and rear bows and hinged side bows. The hinged side bows fold toward each other at the center to provide a means of collapsing the roof. In the straightened position, the hinged side bows are held in place by locking devices which are actuated by a knob at the center of each side bow.

2.04 Two mounting brackets are provided on the rear bow of the frame for attaching the frame to a cabinet or B Tent Support. Pins, which are used to lock the mounting brackets to the B Tent Support or to cabinet mountings, are chained to each bracket.

2.05 Three plastic coated canvas straps are attached to the two rigid bows of the frame to minimize strain on the tent cover.

2.06 Vertical openings are provided in the front and rear of the cover. The front opening is equipped with rope loops and grommets for closing the entrance. The rear opening is provided with rope ties for closing and securing the rear of the cover to a pole.

2.07 Two ropes in each sidewall provide a means of securing the sidewalls when they have been rolled up.

B TENT SUPPORT

2.08 The B Tent Support (Fig. 3) is an aluminum casting with projections at both ends for supporting the D Cabinet Tent. The casting has two centrally located holes slotted for mounting the support on a pole by means of drive screws.

2.09 The support is equipped with a leaf-spring actuated locking device to prevent accidental removal of the support from the pole.

1. GENERAL

1.01 This section covers the methods of placing the B Tent Support, the D Cabinet Tent, and the use of a tent skirt with the D Cabinet Tent.

1.02 This section is reissued to add information pertaining to a skirt for the D Cabinet Tent. The skirt may be ordered as an optional part.

1.03 The skirt is designed to be attached to the bottom of the D Cabinet Tent.

2. DESCRIPTION

D CABINET TENT

2.01 The D Cabinet Tent (Fig. 1) is a compact, lightweight, folding tent designed for placing and removal by one man. The complete tent weighs about 30 pounds.

2.02 The cover of the tent is made of fire-, water-, mildew-, and weather-resistant shelter-tent Army duck sides with a vinyl after-finish and a translucent plastic top. The top, which is stitched securely to the sidewalls, pro-

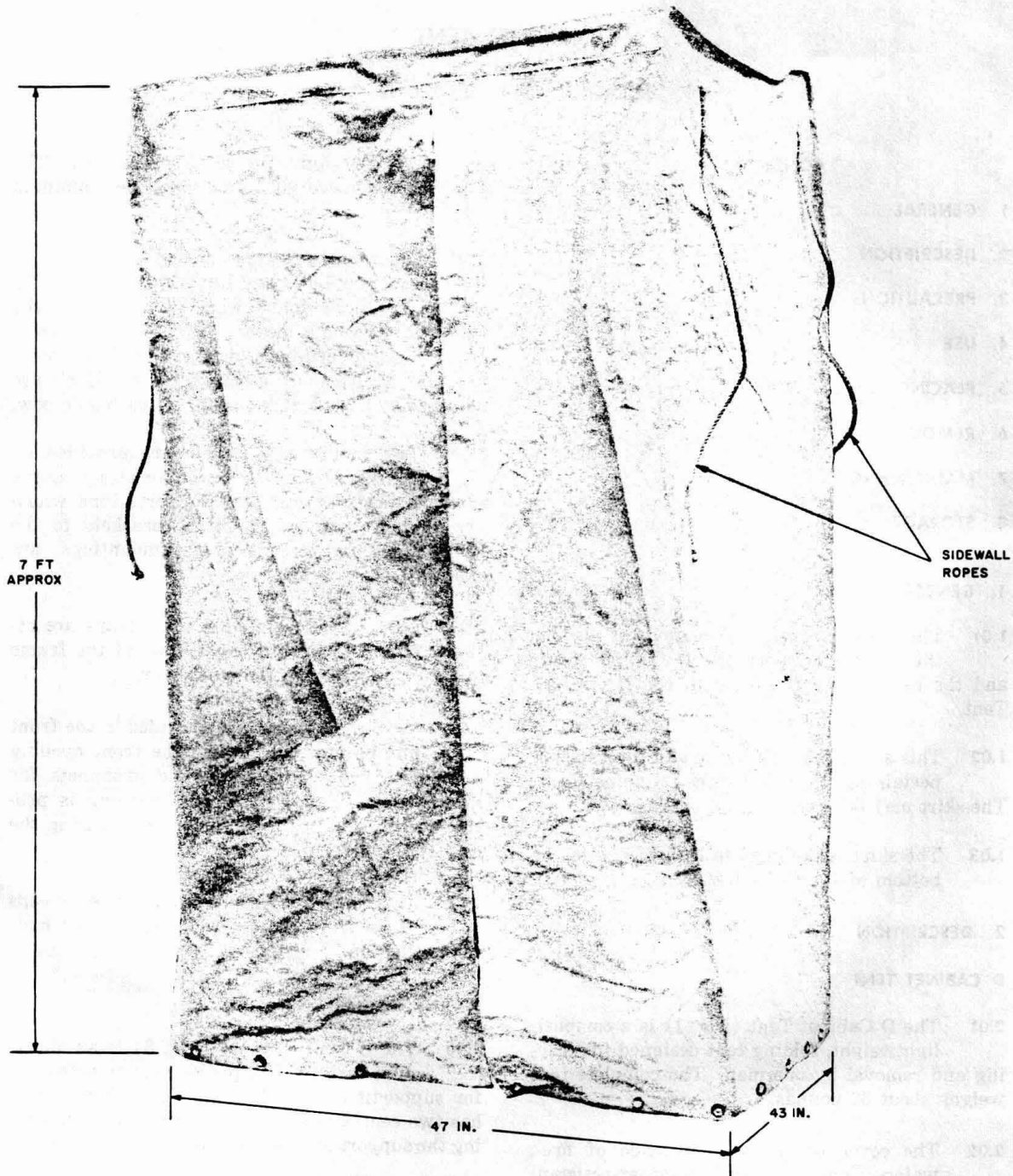


Fig. 1 — D Cabinet Tent

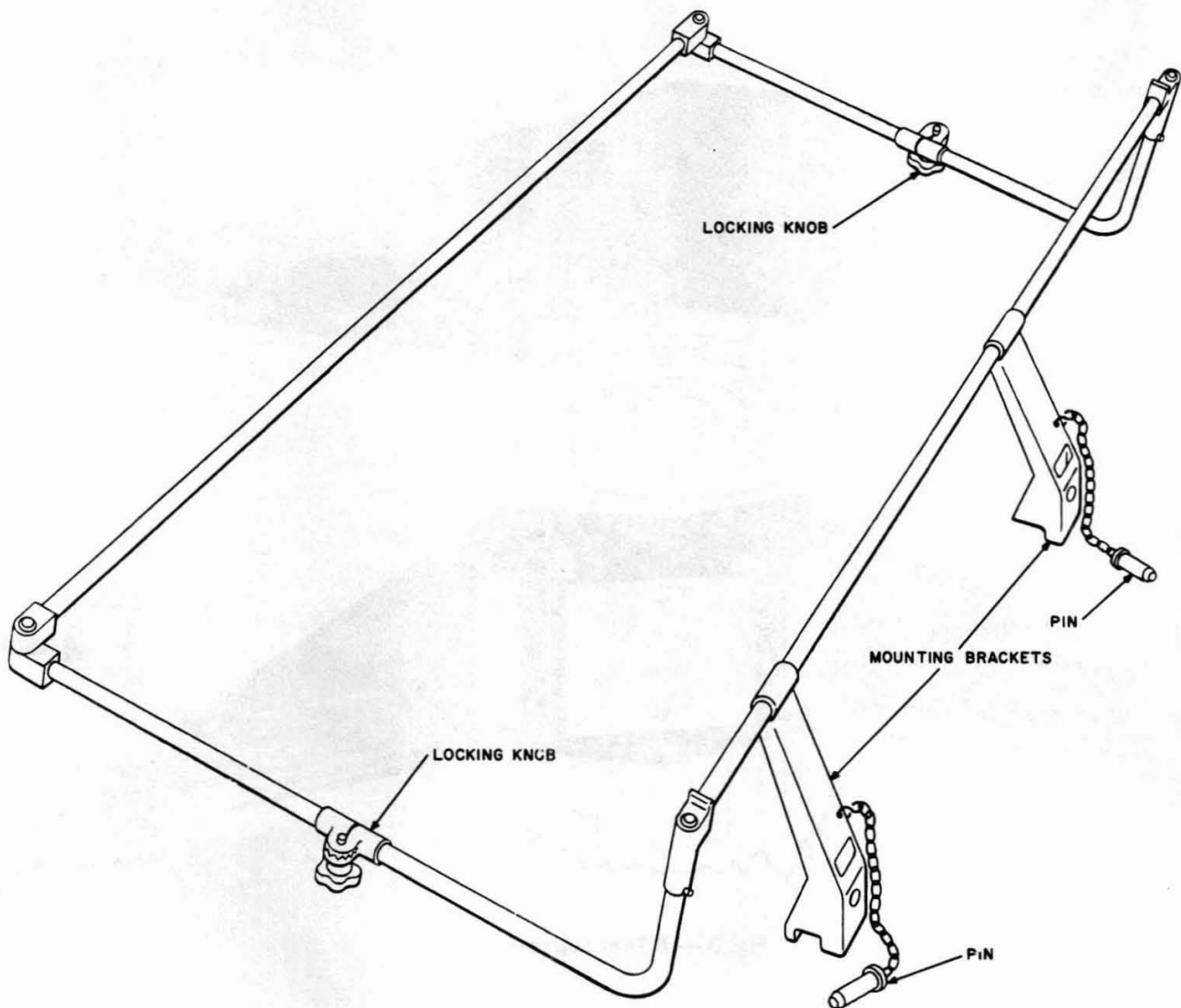


Fig. 2 — D Cabinet Tent Frame

TENT SKIRT

2.10 The skirt consists of two sections made of the same canvas material as the tent cover. Rope lacing and grommets are provided on the upper hem section of the skirt for use in attaching the skirt to the bottom of the tent cover. The hem lengths and upper grommet spacing of the tent skirt sections differ to match the right and left hand sections of the D Cabinet Tent cover.

2.11 The marking **INSIDE-POLE** has been placed on one end of each skirt section. When the skirt sections are laced in place properly on the tent, the markings will be on the inside of

the tent adjacent to the rear opening. The overall length of the D Cabinet Tent with the skirt attached is approximately 10 feet.

3. PRECAUTIONS

- 3.01 Use a body belt and safety strap when working aloft.
- 3.02 *Exercise care when handling a tent to avoid contact with electric power wires and attachments.*
- 3.03 When the tent is mounted, the pins must be in place in the B Tent Support or the mounting brackets of cabinets so equipped. If

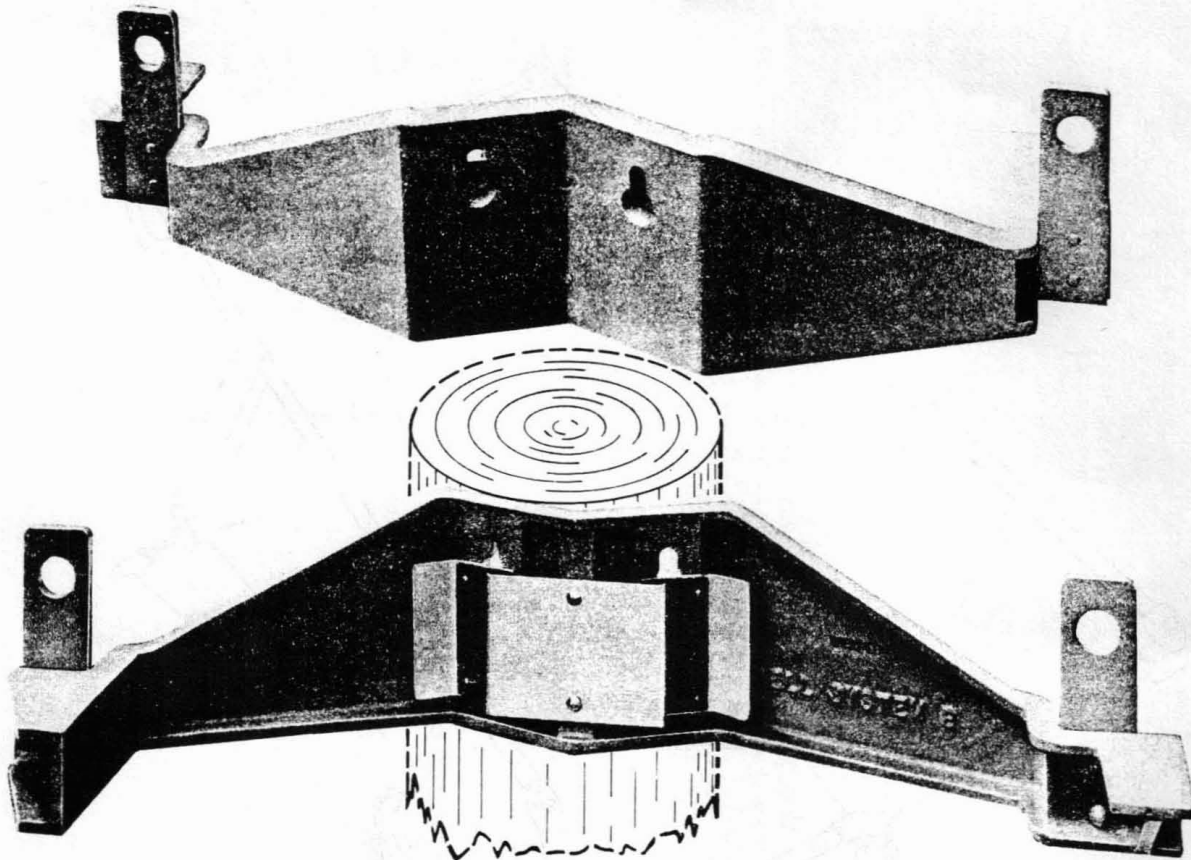


Fig. 3 — B Tent Support

the pins are not used, the frame will be subject to damage.

4. USE

4.01 The D Cabinet Tent is used to protect workmen and equipment during work operations in inclement weather.

4.02 The D Cabinet Tent is designed for use on a pole mounted 1A Line Concentrator (50- or 100-line) Cabinet. The cabinets are mounted at ground level as well as aerially. The placing of the tent is basically the same for either type of cabinet location.

4.03 This tent may also be used on TL Radio Cabinets.

4.04 The B Tent Support permits the use of the D Cabinet Tent at outside cross-connecting terminals, Gfeller Concentrators, pole mounted air dryers, and other cabinet installations.

4.05 The skirt for the D Cabinet Tent is used when additional tent length is needed to provide adequate protection from the weather.

5. PLACING

TENT SUPPORT

5.01 The B Tent Support is attached to the pole above the cabinet (Fig. 4) with two 5/16-inch by 3-inch drive screws. Drive the screws in far enough for the heads to engage the slotted hole of the tent support but not so far as

MOUNT SUPPORT
IN OPEN AREA
BETWEEN STUB
AND POLE

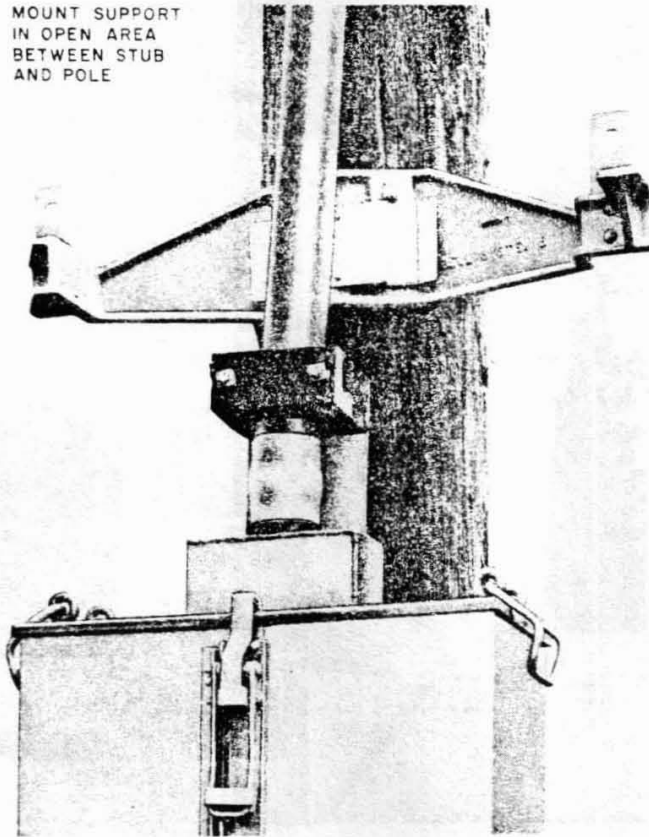


Fig. 4 — B Tent Support Mounted on Pole

to prevent the support from being readily removed.

5.02 With the support secured to the pole, the tent may be mounted in the usual manner. When the tent has been removed, detach the support from the pole by releasing the locking device.

CABINET TENT

5.03 To prepare the tent for placing, roll up and tie the sidewalls, collapse the frame, and secure the assembly with one or two houseline ties.

5.04 Raise the tent into position above the cabinet (Fig. 5). Where a cabinet is mounted aerially, the tent must be raised to the balcony with a handline. Engage the mounting brackets on the tent frame with the brackets on the cabinet, or on the B Tent Support if one is used. Insert the pins to secure the tent in place.

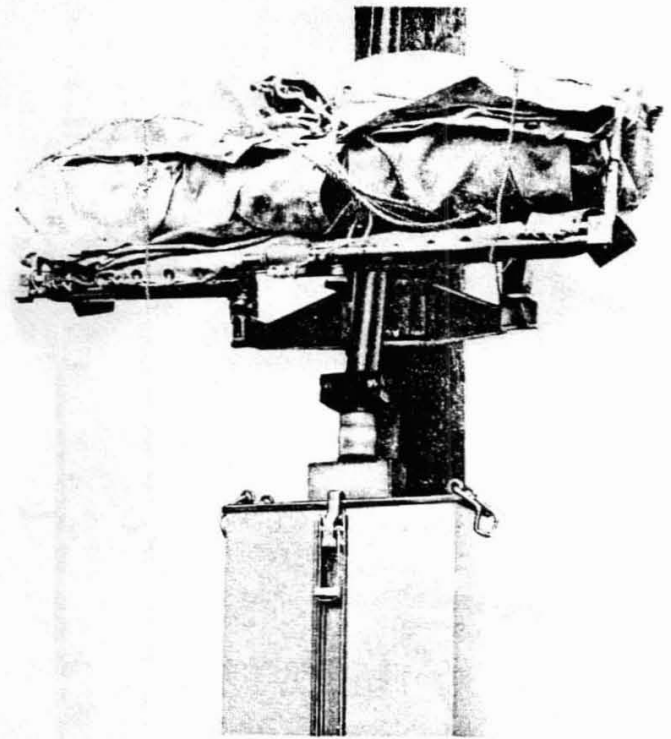


Fig. 5 — Tent in Position above Cabinet

5.05 Remove the temporary houseline ties, open the frame, and tighten the knobs on both hinged bows of the frame.

5.06 Fig. 6 illustrates the tent mounted aerially, with the sidewalls rolled and tied with the sidewall ropes.

5.07 Release the sidewall ropes, unroll the sidewalls, and lace the vertical openings in the cover as required.

Note: At an aerial location, where the cabinet is directly attached to a pole, it is necessary for the workman to position himself on the opposite side of the pole (using a body belt and safety strap) and tie the lacing ropes around the pole with square knots.

5.08 Fig. 7 illustrates the tent at an aerial location with the rear opening closed and tied by rope ties around the pole.

5.09 Fig. 8 illustrates the tent at a ground level location (with a platform) with the rear opening of the tent closed and tied.

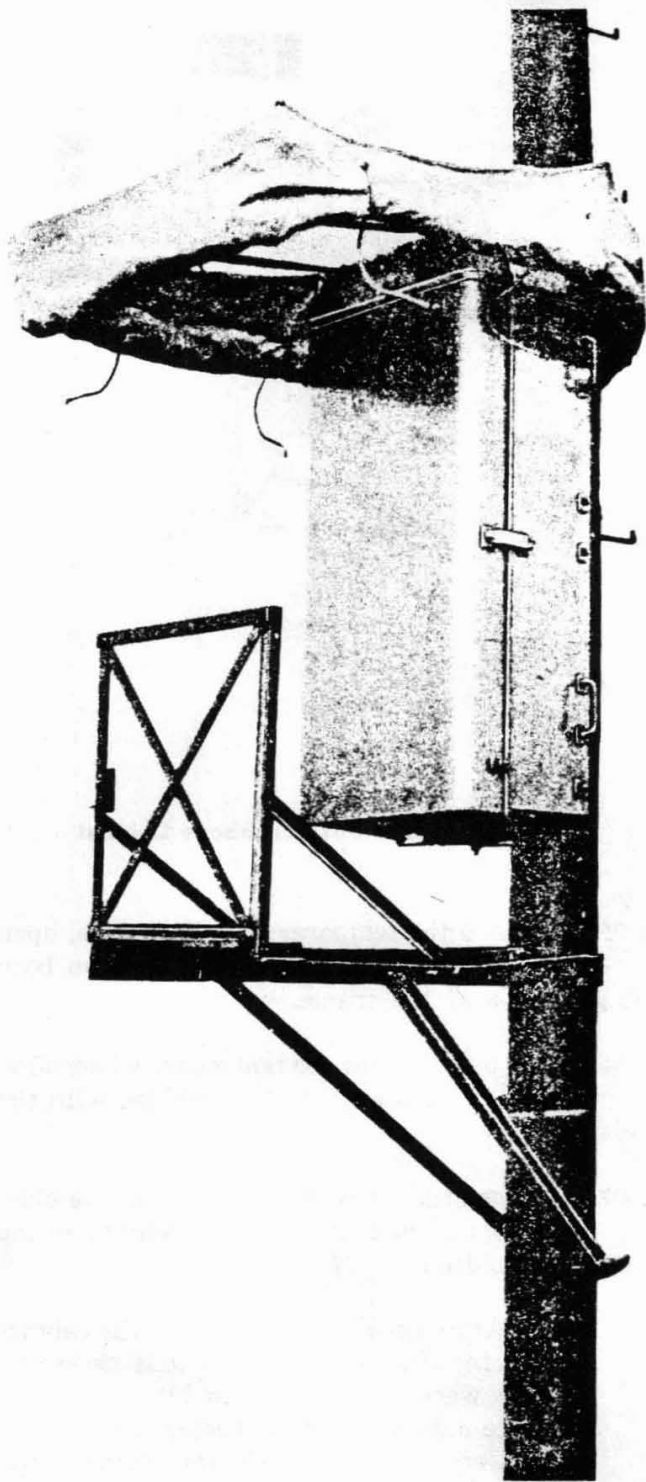


Fig. 6 — Tent Mounted with Sidewalls Rolled and Tied

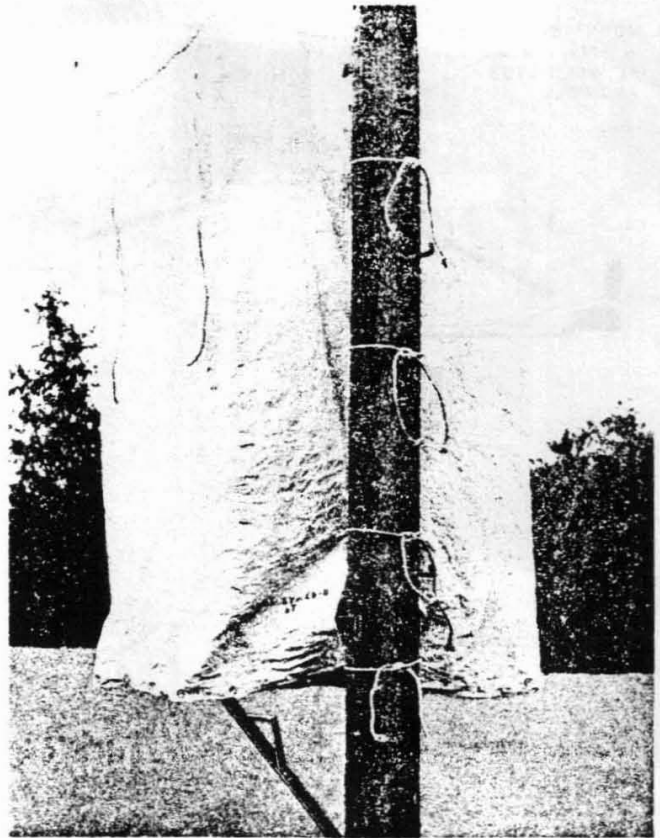


Fig. 7 — Rope Ties around Pole

5.10 For ease of exit and entry, one side of the cover can be pulled up and tied with a sidewall rope as illustrated in Fig. 9.

↳ TENT SKIRT

5.11 In most cases, it will be more convenient to attach the skirt to the tent after the tent is in place. However, if the tent is to be used at an aerial location and conditions exist that would make attaching the skirt difficult, the skirt may be attached with the tent laying on the ground.

5.12 To attach the skirt, position each skirt section so the marking **INSIDE-POLE** is to the inside of the tent at the tent opening adjacent to the pole and the rope lacing on the skirt is adjacent to the bottom of the tent cover. Pass the first rope loop on the skirt through (from inside to outside) the associated grommet in the tent cover. Fold the top edge of the skirt section and pass the rope loop through the grommet in the skirt as shown in Fig. 10.

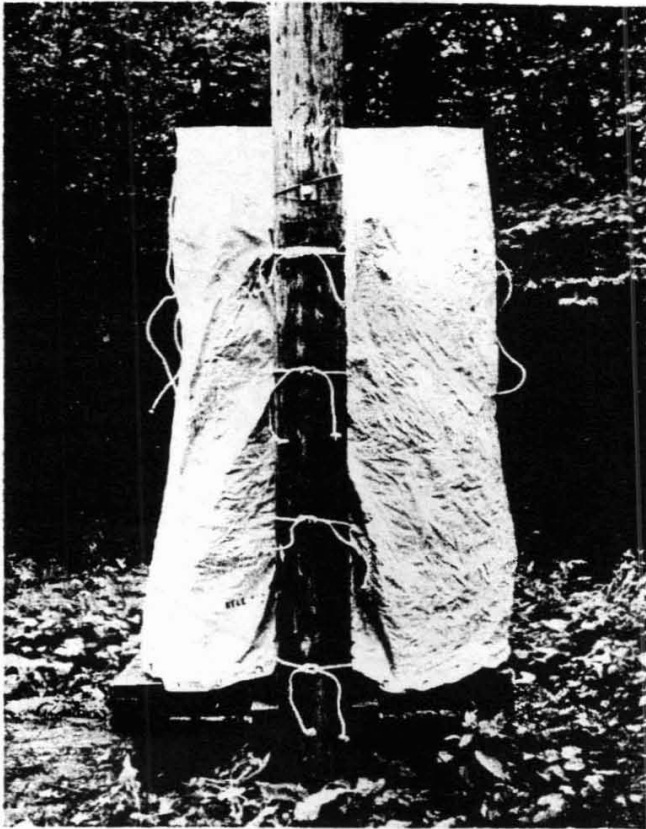


Fig. 8 — Tent Installed at Ground Location

5.13 Pass the second rope loop through its associated grommets in tent cover and skirt. Pull the first rope loop over and pass the second loop through the first loop. Repeat the procedure with each successive loop as shown in Fig. 11.

5.14 To secure the rope lacing prior to closing the skirt, tie the rope loops as shown in Fig. 12. To close the top of the skirt use the rope loop on the tent cover. Pass the loop through the grommet in the long section of skirt, through the grommet in tent cover, and through grommet in the short section of skirt, as shown in Fig. 12.

5.15 To complete closing the skirt, use the rope loops on skirt. Leave the corners of skirt turned down, as shown in Fig. 13, to allow drainage of any water that has been caught in the fold at the top of the skirt. The grommets in the bottom hem of the skirt may be used to attach tie-down ropes, if required.

6. REMOVAL

6.01 If the tent skirt has been attached to the tent, it may be removed prior to removing the tent or may be left attached. If left attached, roll the skirt with the tent sidewalls as covered in 6.02.

6.02 Untie the ropes on both vertical openings of the cover. Roll up and tie each sidewall with the sidewall ropes. Fig. 14 illustrates a tent at a ground level location with one side rolled up and tied.

Note: Roll the sidewalls from the inside and tie the sidewall ropes to the tent frame. Do not pull the ropes too tight. When the ropes are too tight they interfere with collapsing the frame.

6.03 Loosen the knobs on the hinged bows of the frame and collapse the frame.

6.04 Secure the assembly with two temporary houseline ties tied around the frame to prevent the frame from extending during handling.

6.05 Extract the pins from the mounting brackets and remove the tent from the cabinet or B Tent Support.

Note: Where a cabinet is mounted aurally, it will be necessary to lower the folded tent to the ground with a handline.

6.06 If the B Tent Support has been used, release the locking device and remove the support. Leave the drive screws in place for future use.

7. MAINTENANCE

7.01 Since each laundering removes some of the protective compound and life from the fabric, laundering of the tents and tent skirts should be kept to a minimum.

7.02 To install a new cover on the D Cabinet Tent frame proceed as follows:

- (1) Properly fit the cover on the frame, making sure that the straps are in the proper locations.

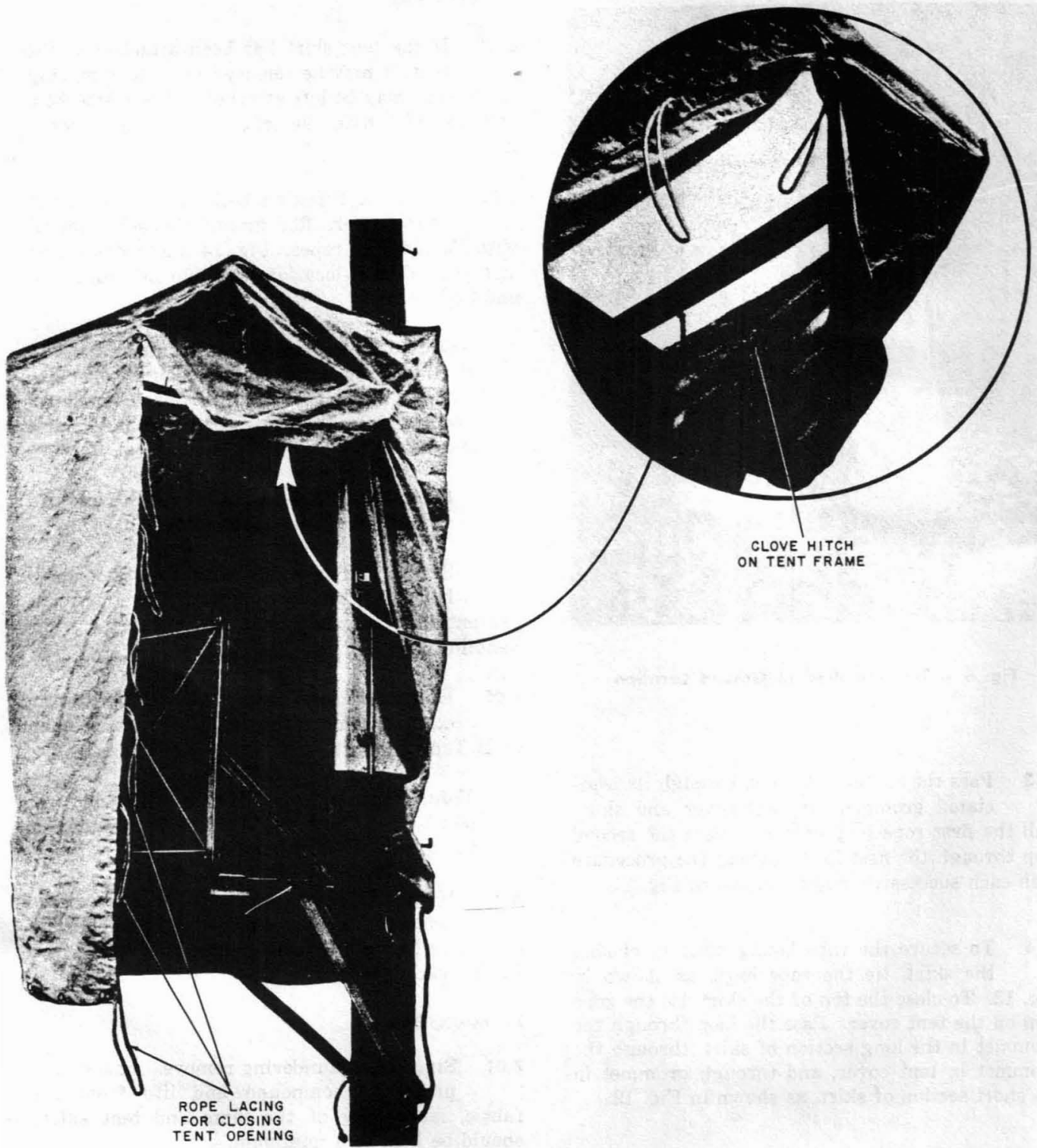


Fig. 9 — Tent Side Tied with Sidewall Rope

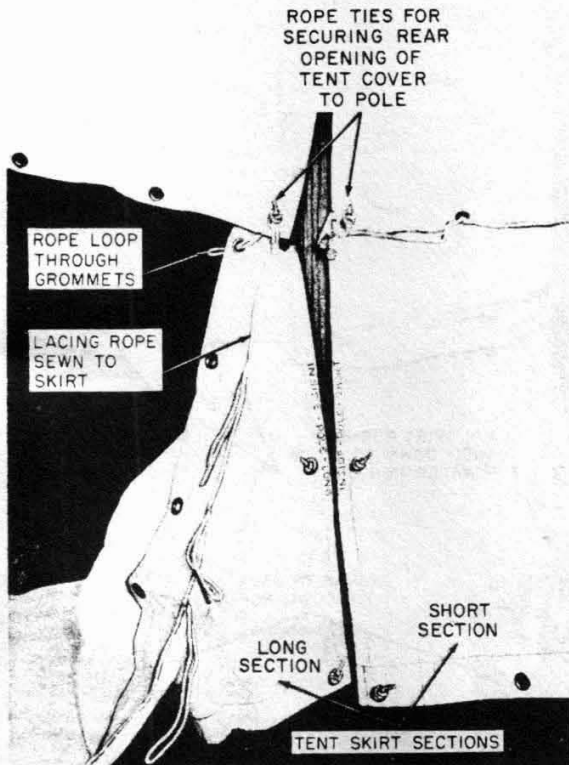


Fig. 10 — Inside of Tent — Looking Toward Pole ↙

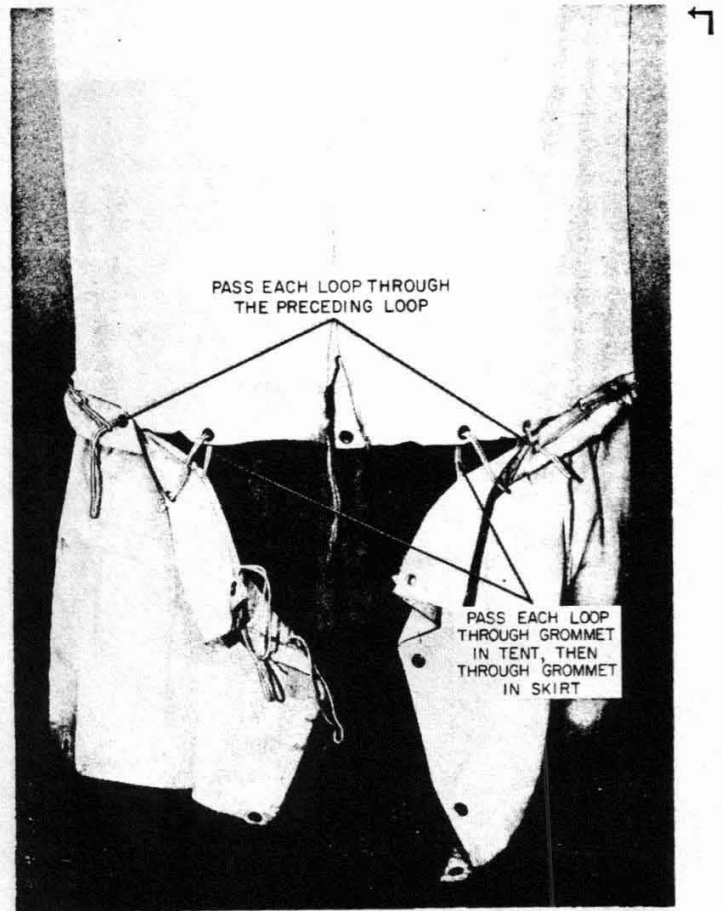


Fig. 11 — Front of Tent — Lacing Partially Completed ↙

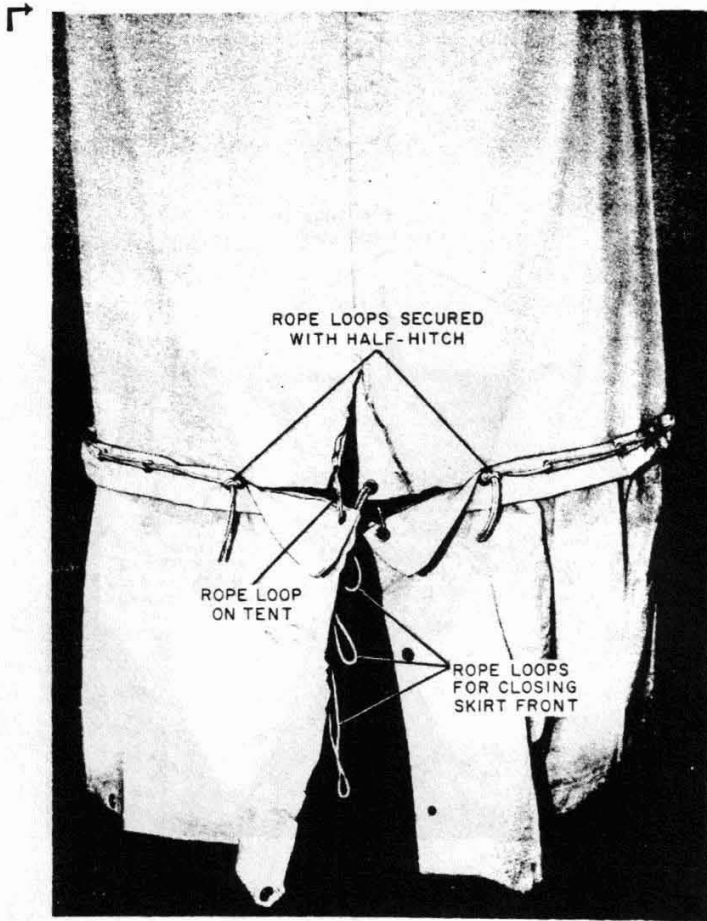


Fig. 12 — Front of Tent — Closing the Skirt

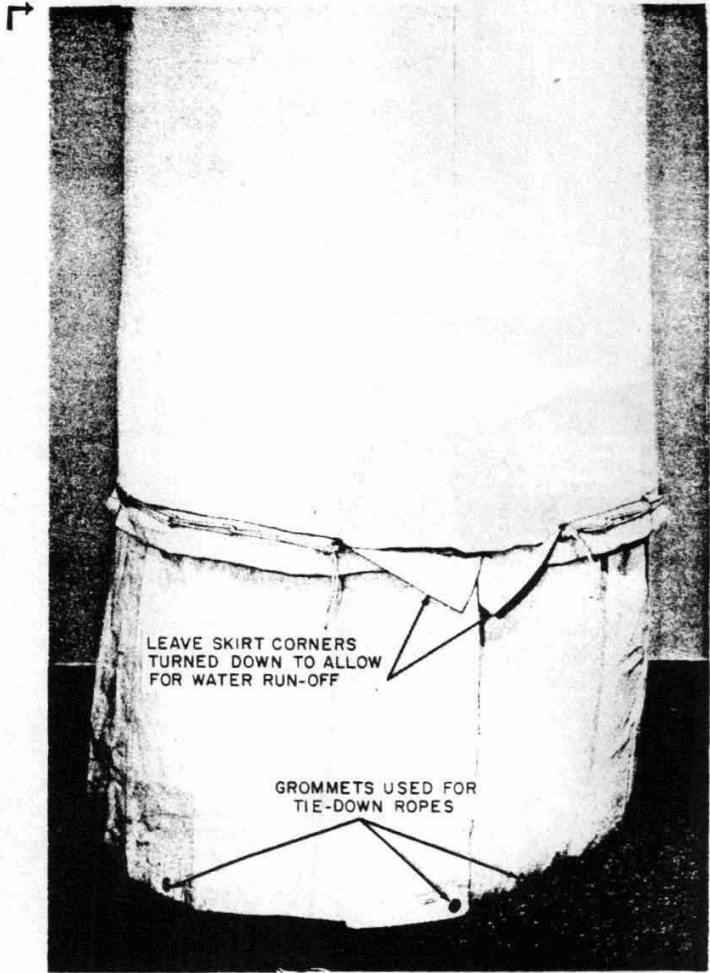


Fig. 13 — Front of Tent — Skirt Closed

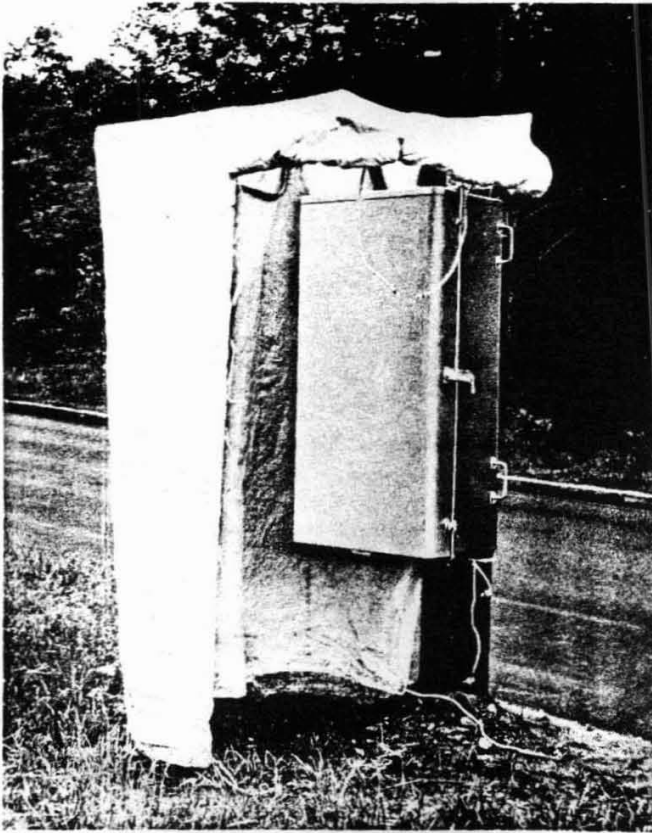


Fig. 14 — Tent Sidewall Rolled and Tied

(2) Lace each strip after placing it properly on the frame. Each strip (total of four) will require about 3 feet of rope. The location of the strips is illustrated in Fig. 15.

7.03 When replacing the plastic coated canvas straps, each strap is laced to the frame at two locations. About 2 feet of rope is required at each location on each strap. If in good condition, the existing rope can be reused.

7.04 Replacement parts for the tent are:

(a) Cover and straps.

(b) Rope, cotton, gray, 3/16-inch diameter, 3 strand or No. 4 braided cotton or nylon venetian blind cord. Procure lacing rope locally.

8. STORAGE

8.01 Care should be exercised to protect the tent and skirt from sharp objects during use or storage to avoid punctures or tears. ←

8.02 The tent cover and skirt should be dry before being stored. At times it may be necessary to transport a wet tent or skirt. In that event, they should be dried at the first opportunity. ←

8.03 To minimize soiling of the canvas and to protect the cover from damage, the tent should be kept in the B Tent Bag when not in use.

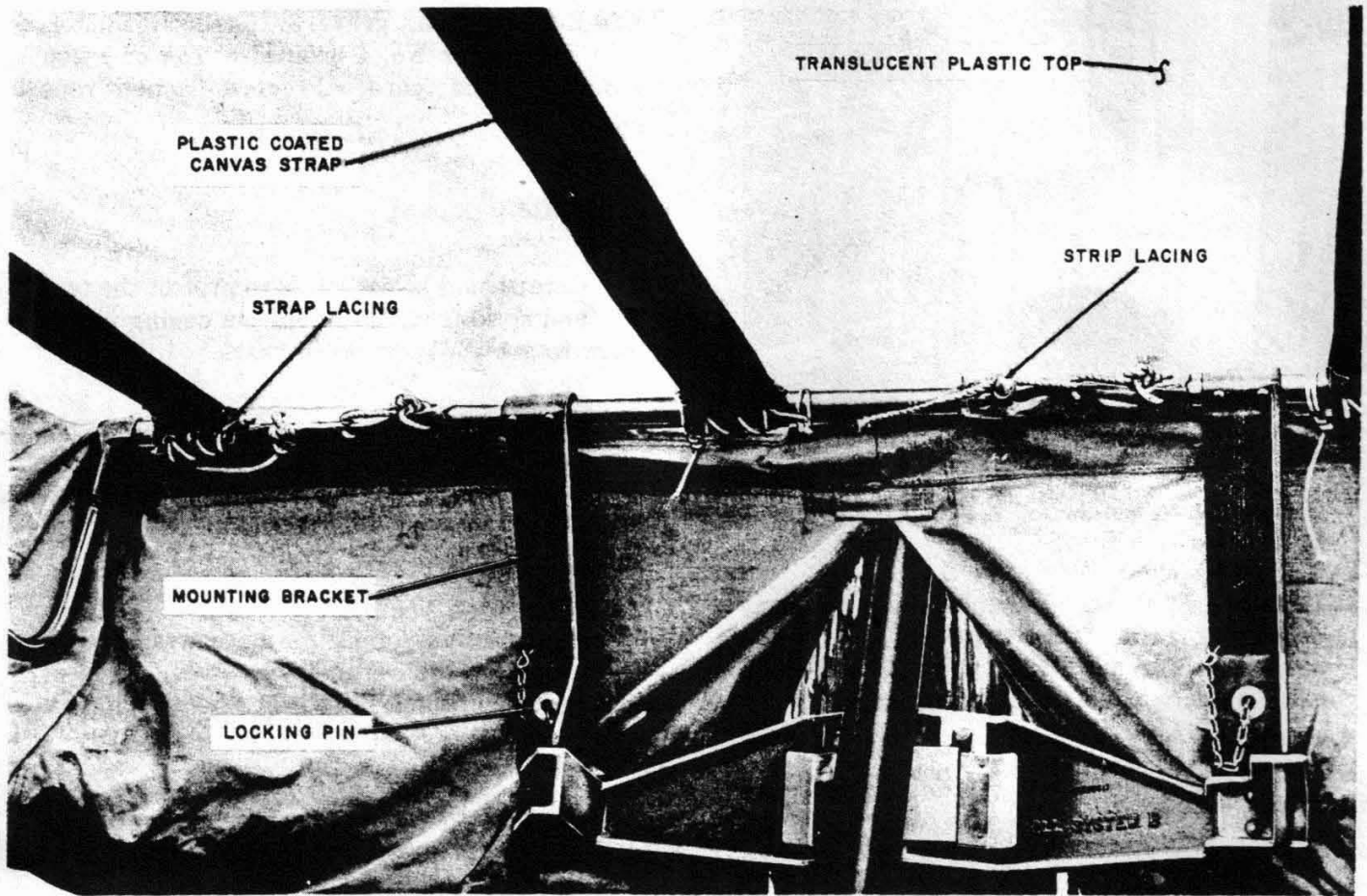


Fig. 15 — Method of Lacing Cover and Straps to Frame