

## AERIAL TENTS

### DESCRIPTION AND USE

	CONTENTS	PAGE
1. GENERAL . . . . .		1
2. DESCRIPTION . . . . .		1
3. PRECAUTIONS . . . . .		3
4. USE . . . . .		3
5. PLACING . . . . .		4
6. REMOVAL . . . . .		5
7. MAINTENANCE . . . . .		5
8. STORAGE . . . . .		7
9. SUPERSEDED TYPE . . . . .		7

#### 1. GENERAL

1.01 This section has been reissued to cover the description and use of the H Aerial Tent and to retain the F Aerial Tent as a superseded type.

1.02 The H Aerial Tent cover is designed to accommodate two cables placed on opposite sides of a pole. The F Aerial Tent does not have this feature.

1.03 Since this reissue covers a general revision, marginal arrows ordinarily used to indicate changes have been omitted.

#### 2. DESCRIPTION

2.01 The H Aerial Tent (Fig. 1) is a compact, lightweight folding tent designed for installation and removal by one man. The complete tent weighs about 30 pounds.

2.02 The sidewalls of the tent cover are made of fire, water, mildew, and weather-resistant shelter-tent Army duck with a vinyl afterfinish. A translucent plastic top is stitched securely to the sidewalls and provides adequate light for work operations.

2.03 The cover has a vertical opening in each of two opposite sides to accommodate aerial cable and to permit workmen to enter or leave. The vertical openings are provided with grommets and rope loops for closing the tent after it

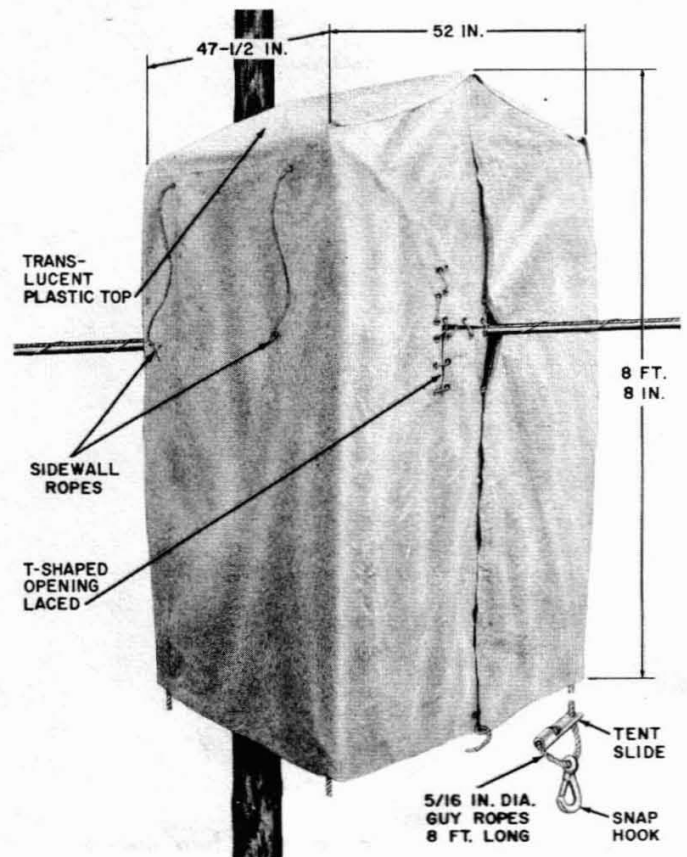


Fig. 1 — H Aerial Tent

\*\*Reprinted to comply with modified final judgment.

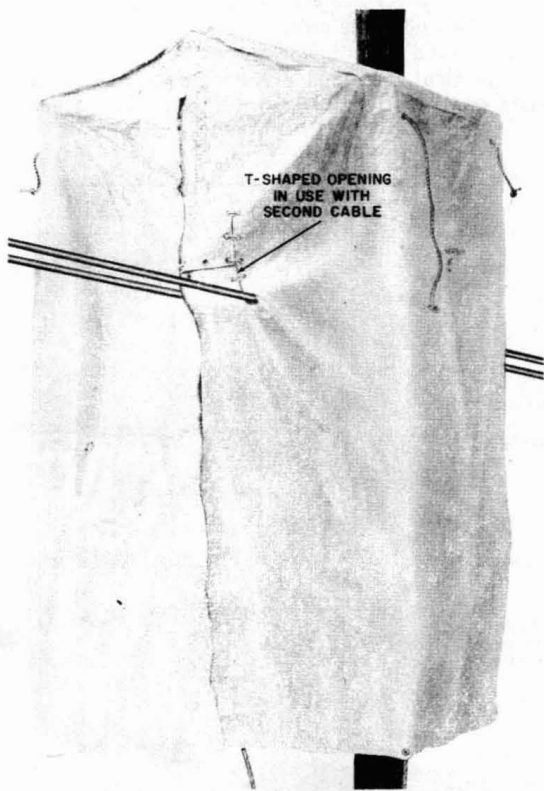
**SECTION 081-310-121**

is erected. In addition, each vertical opening has a supplementary T-shaped opening to accommodate a second cable if two cables are supported on opposite sides of a pole (Fig. 2). These openings are closed by cotton rope lacing.

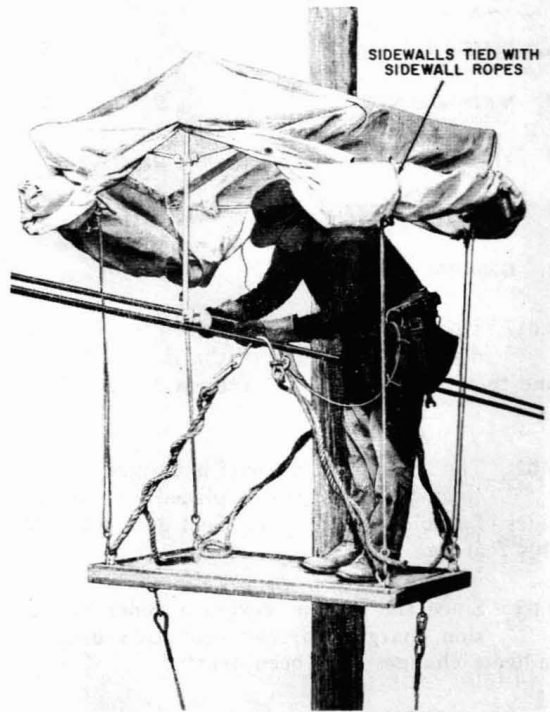
**2.04** Two ropes in each sidewall provide a means of securing the sidewalls when they have been rolled up. Fig. 3 illustrates the tent with the sidewalls rolled up and tied with the sidewall ropes.

**2.05** The frame is made of aluminum-alloy tubing and consists of a rigid center bow and two side bows which are hinged to sliding sleeves on the center bow. The sliding sleeves are equipped with latches which lock the side bows in the open position. The ends of the center bow are attached to clamp assemblies which provide a means of mounting the frame on cable suspension strand. The H Aerial Tent has a knob-operated type clamp instead of the sleeve-type clamp used on the F Aerial Tent. The clamps are shown in Fig. 4.

**2.06** Two plastic-coated canvas straps are attached to the bows to minimize strain on the tent cover.



**Fig. 2 — Tent Mounted Showing Two Cables**



**Fig. 3 — Tent Sidewalls Rolled and Tied**

**2.07** Attached to each of the side bows are two guy ropes for use in anchoring the tent. Each guy rope is equipped with a tent slide (tensioning device) and a snap hook to facilitate the placing and removal of the tent. The tent slide and snap hook are illustrated in Fig. 5.

### 3. PRECAUTIONS

**3.01** Use a body belt and safety strap when working aloft.

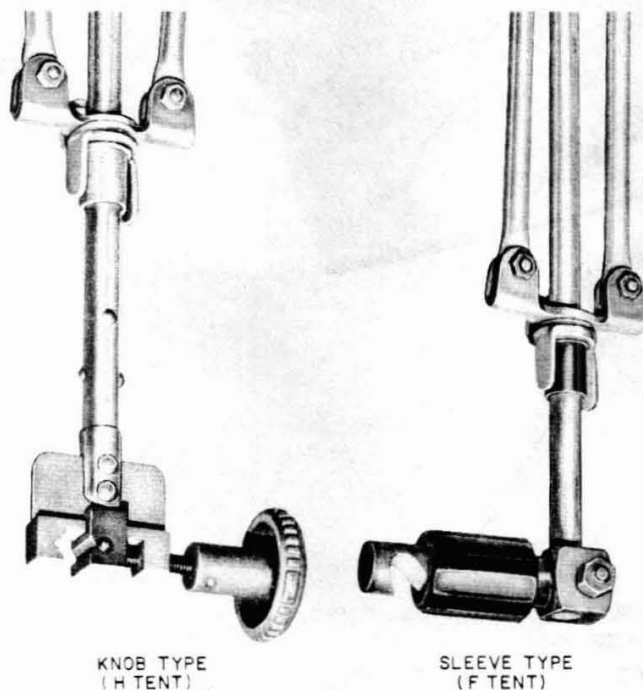
**3.02** *Exercise care when handling a tent to avoid contact with electric power wires and attachments.*

**3.03** When placing the tent, do not untie the sidewall ropes until the guy ropes are secure. When removing the tent, roll up and tie the sidewalls before releasing the tension on the

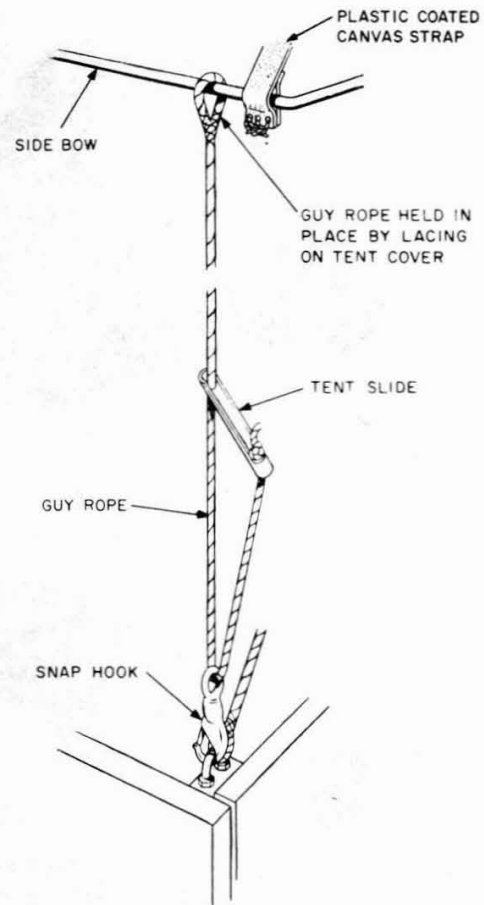
guy ropes. If the sidewalls should accidentally fall free during these operations when the guy ropes are not tensioned properly, the sail area presented could make the tent difficult to handle on a windy day.

### 4. USE

**4.01** The H Aerial Tent is designed to provide shelter on aerial platforms when desired.



**Fig. 4 — Types of Clamp Assemblies on Aerial Tents**



**Fig. 5 — Guy Rope Showing Tent Slide and Snap Hook**

**5. PLACING**

**5.01** To prepare the tent for placing, lay it flat on the ground, fold the sides, roll up the sidewalls, and tie them with the sidewall ropes (Fig. 6). Place the rolled and tied sidewalls between the center and outer bows and secure the tent by tying it with the guy ropes.

**5.02** With the handline block in place on the strand, tie one end of the handline around the tent at about the midpoint.

**5.03** Climb the pole or ladder to the platform, secure the safety strap on the strand, raise the tent to the platform, and remove the handline from the tent.

**5.04** Position the tent on the platform so that the handwheel (threaded sleeve on F tents) on the clamp assembly will be on the workman's side of the strand when the tent is in place on the strand. Remove the guy ropes from around the tent. Estimate the required length of the two guy ropes that will be secured on the opposite



**Fig. 6 — Preparing the H Aerial Tent for Placing or Storage**

side of the platform from the workman and, using the tent slides, adjust the guy ropes to the estimated length. Secure the guy ropes by engaging the two snap hooks in the respective platform support rope U-bolts.

*Note:* The guy rope length should be sufficient to permit the top of the tent to lean slightly beyond a vertical position toward the workman. If the guy ropes are too long, they will permit the tent to roll around the strand.

**5.05** Raise the tent into position, engage the clamps on the strand, and tighten the clamping screws. Extend the roof by raising the sleeves on the center bow. Turn the latches on the sliding sleeves to lock the bows in position.

**5.06** Allow the tent to lean away from the two engaged guy ropes and toward the workman until it is supported in a position just beyond the vertical. Maintain the tent in this position by holding the other guy ropes. Engage the snap hooks of these guy ropes in their respective platform support rope U-bolts and loosely tension these two guy ropes.

**5.07** Retension all guy ropes. Untie the sidewall ropes, unroll the sidewalls, and lace the sides as required.

## **6. REMOVAL**

**6.01** After unlacing the sides, roll up and tie both sidewalls. Lay each rolled up sidewall on the roof of the tent between the center bow and side bows. Lower the sleeves on the center bow to collapse the roof, slack off the guy ropes, loosen the clamp assemblies on the strand, and remove the tent from strand. Remove the guy rope snap hooks from the platform support rope U-bolts.

**6.02** Secure the tent with the guy ropes, attach the handline at about the midpoint of the tent, and lower the tent to the ground.

## **7. MAINTENANCE**

**7.01** Since each laundering removes some of the fireproofing, waterproofing, and life from the fabric, keep laundering of tents to a minimum.

**SECTION 081-310-121**

**7.02** To install a new cover on the tent frame:

(a) Place the cover on the frame, making sure the plastic coated canvas straps are in their proper locations.

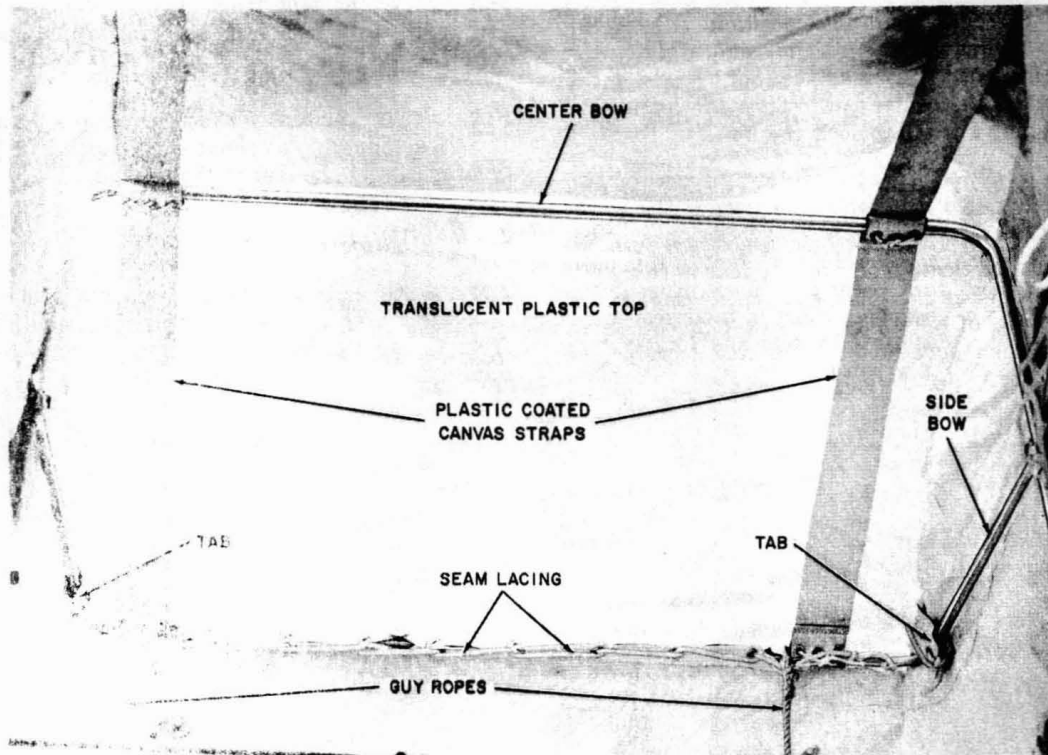
(b) On each side bow, tie the two tabs and lace the seam with lacing rope as shown in Fig. 7. A 1-foot piece of rope is required for each tab and a 6-1/2 foot piece for each seam.

**7.03** To install new plastic coated canvas straps, lace each strap to each of the three bows (Fig. 7). A piece of lacing rope approximately 2 feet long is required for each lacing.

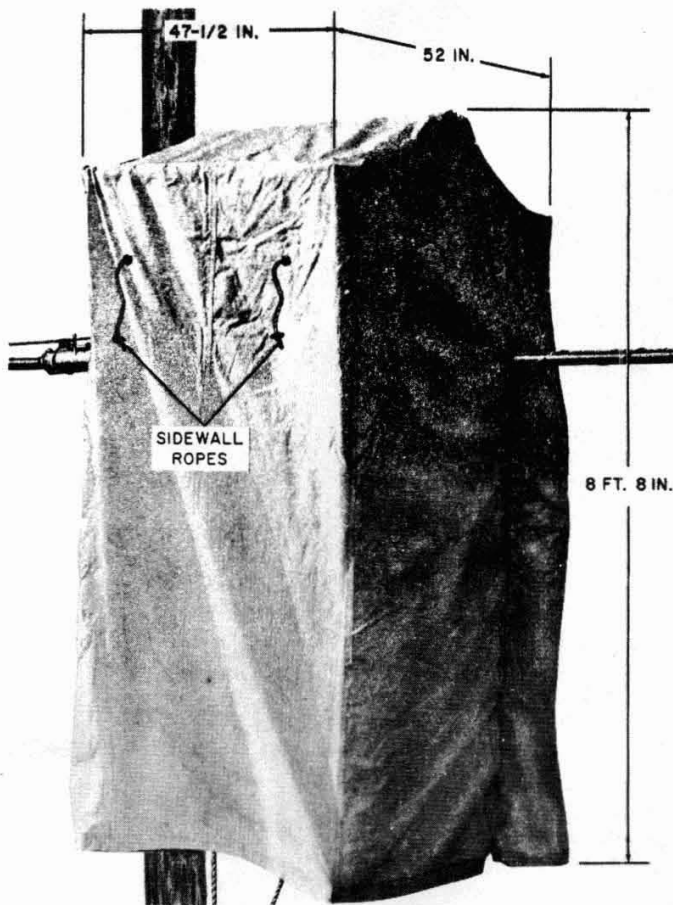
**7.04** If a tent is in need of repair, handle it in accordance with local instructions.

**7.05** Replacement parts are:

- (a) Cover and straps.
- (b) Snap hooks and tent slides.



**Fig. 7 — Method of Lacing Cover and Straps to Bows**



**Fig. 8 — Superseded F Aerial Tent**

(c) Rope, guy, 5/16-inch diameter.

(d) Rope, cotton, gray, 3/16-inch diameter, 3-strand or No. 4 braided cotton or nylon venetian blind cord for lacing T-shaped openings, straps, tabs, and seams. Procure lacing rope locally.

## **8. STORAGE**

**8.01** To avoid punctures or tears, take care to keep the tent from coming in contact with sharp objects during use and storage.

**8.02** To minimize soiling of the canvas and to protect the cover from damage store the tent in the B Tent Bag.

**8.03** The tent should be dry before it is stored. At times it may be necessary to transport the tent when it is wet. If this is necessary, dry the tent at the first opportunity.

## **9. SUPERSEDED TYPE**

**9.01** The superseded F Aerial Tent (Fig. 8) is similar to the H Aerial Tent and can conveniently be used in the same applications except where there are two cables placed on opposite sides of a pole.